

## Chapter 1 Installation Guide for the Client Program of the Electronic Version of Siku Quanshu (Wenyuange Edition) Intranet Version

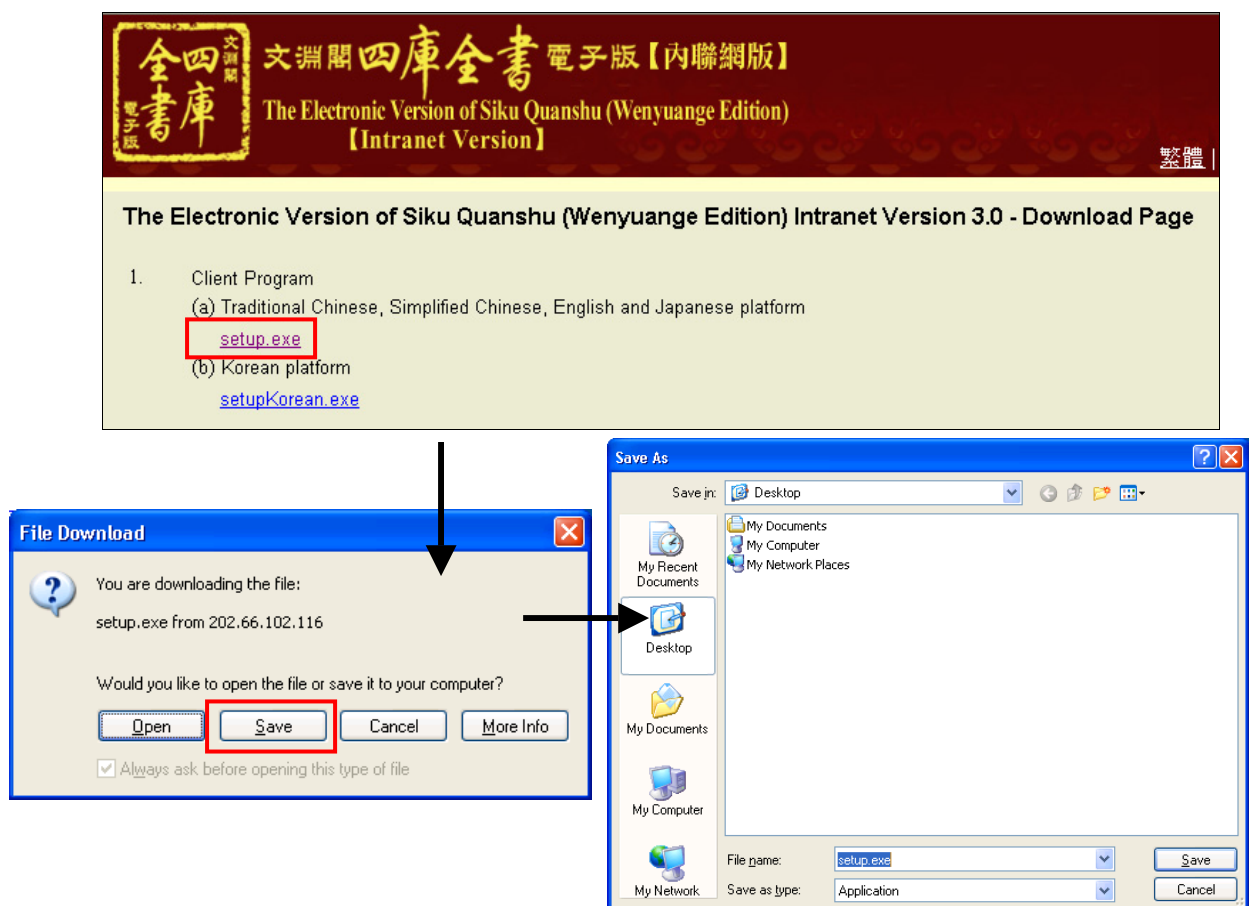
### 1. System Requirements

The minimum requirements of the Electronic Version Of Siku Quanshu (Wenyuange Edition) Intranet Version are:

- (1) Pentium III 800 or above CPU
- (2) 256MB RAM
- (3) 140 MB Hard Drive space (for client program and font installation)
- (4) 1024 x 768 Resolution with 32768(15bit) or above color display
- (5) Microsoft Windows XP (Traditional Chinese, Simplified Chinese, English, Japanese or Korean version) (already updated to Service Pack 2)
- (6) East Asian Language Support installed (\*Please refer to 5.Technical Support)
- (7) Microsoft Internet Explorer 6.0
- (8) Microsoft Windows Installer 3.1 and Microsoft .NET Framework 2.0
- (9) Your computer must have access to the intranet of your institution.

### 2. Installation

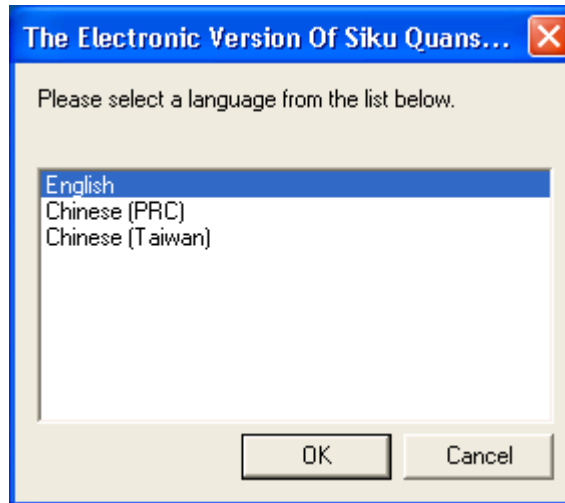
- ① Open your web browser, enter the URL *http://HOST\_IP/skqs/download*, where HOST\_IP is the specified domain name or IP address of the machine where the SKQS Server is installed (Please ask your network support staff). Click “setup.exe”, then click “Save” to download the installation program to your desired location, e.g. “Desktop”.



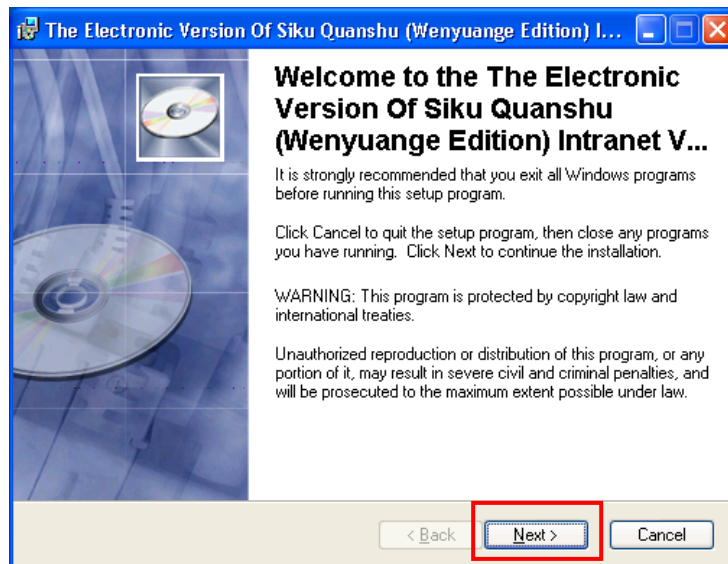
- ② After the download completed, double-click the newly downloaded file “setup.exe” to launch the installation. You must have the Administrator’s right to install the Client Program.



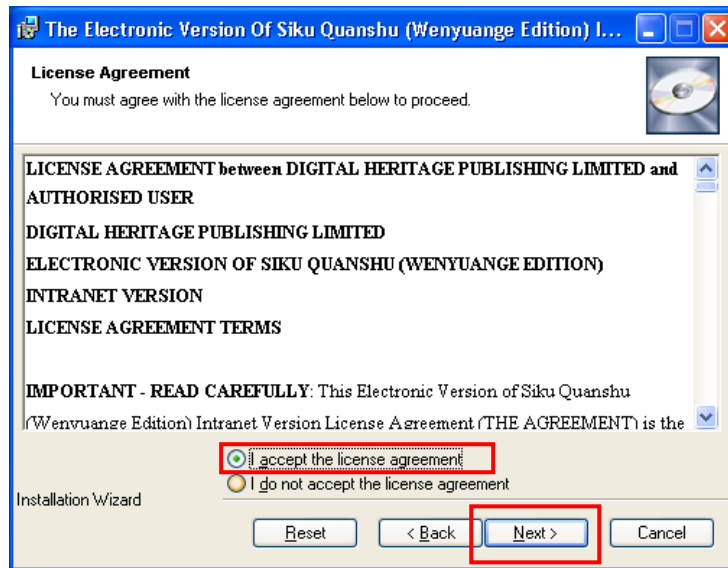
- ③ First, choose the language for the installation process and click “OK”.



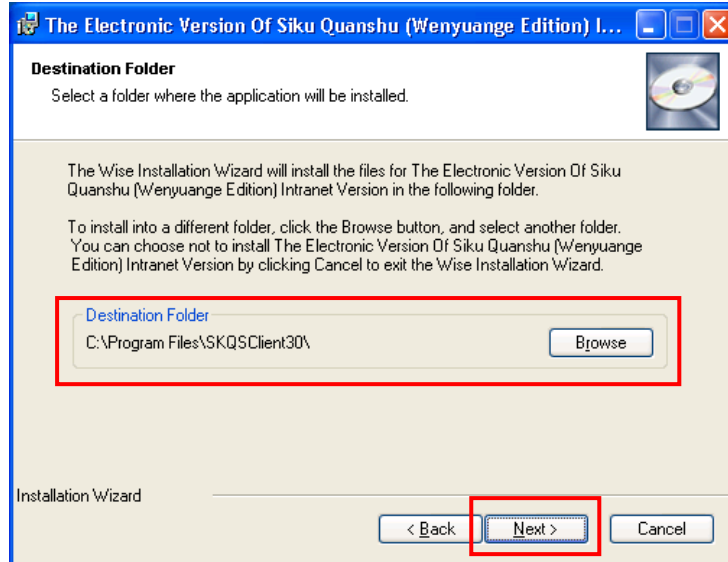
- ④ Before the installation of the Client Program, the installer will first check whether the prerequisites Windows Installer 3.1 and .NET Framework 2.0 have already been installed in your computer. If not, the installer will install them automatically. It may take at least 10 minutes to complete the installation process, depending on the configuration of your computer.
- ⑤ After installation of the prerequisites, the “Welcome” window will appear. It is strongly recommended that you close all other running programs before continue. If there is no problem, click “Next” to continue.



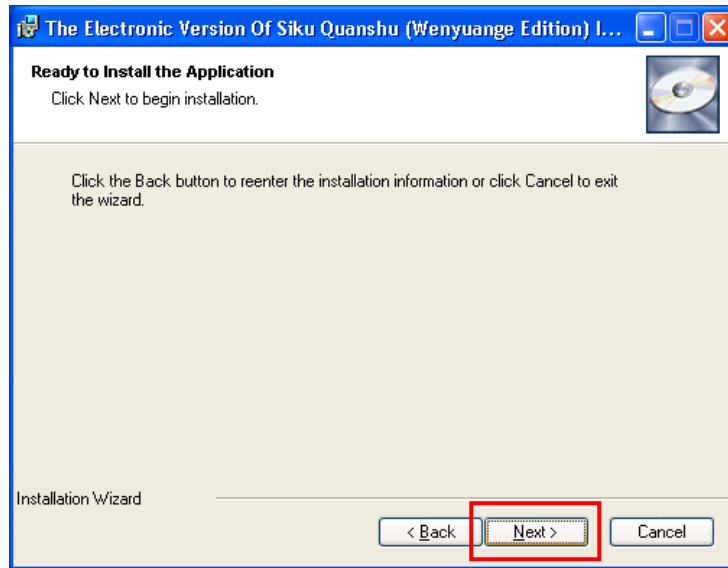
- ⑥ The “License Agreement” window will appear. Please read carefully and select “I accept the license agreement”. Click “Next” to continue.



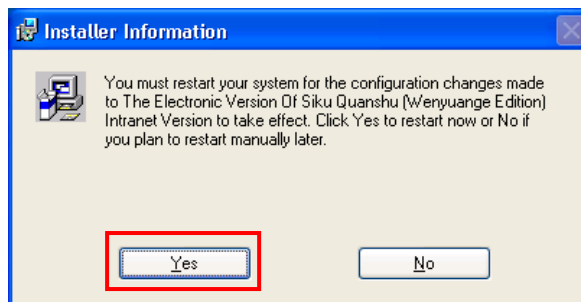
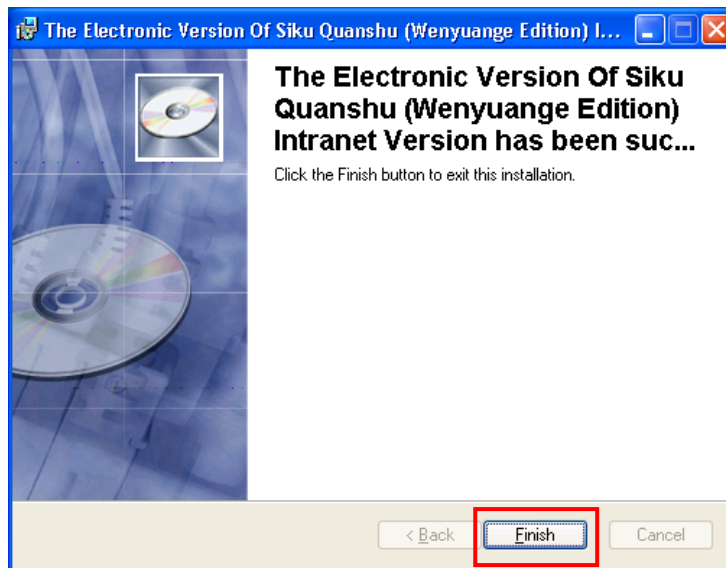
- ⑦ In the “Destination Folder” window, you can choose to install the client program in the default location “C:\Program Files\SKQSCient30”, or click “Browse” to change. Then click “Next” to continue.



⑧ The client program is now ready to be installed to your computer, click “Next” to go.

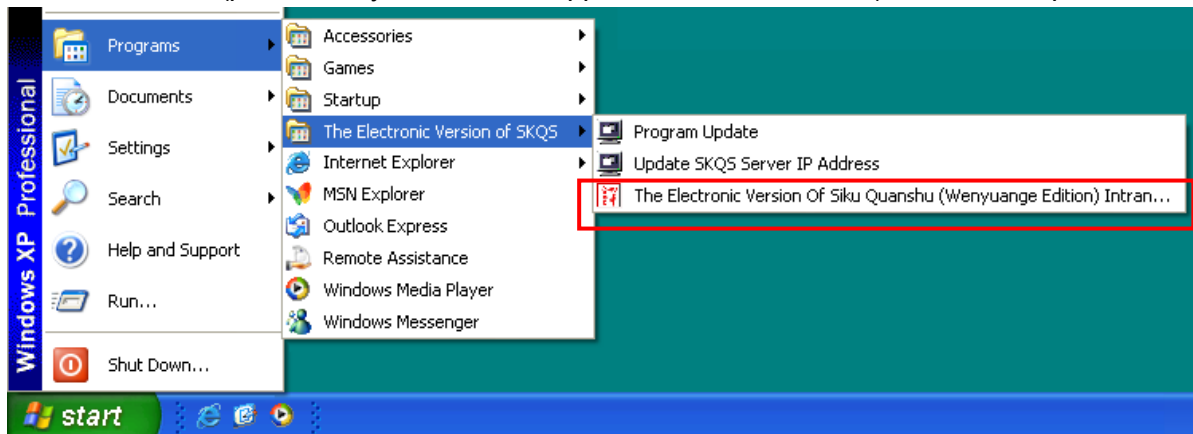


⑨ When the successfully installed message appeared, click “Finish” to exit. In order to let the installation take effect, please click “Yes” in the next window to restart the computer.



### 3. Launch the Electronic Version of SKQS

- ① After you have restarted the computer, select “Start” → “Programs” → “The Electronic Version of SKQS” → “The Electronic Version Of Siku Quanshu (Wenyuange Edition) Intran...”. Since it is your first time to run the program, you have to enter the IP address or domain name of the SKQS Server (please ask your network support staff for information), then click “Update”.



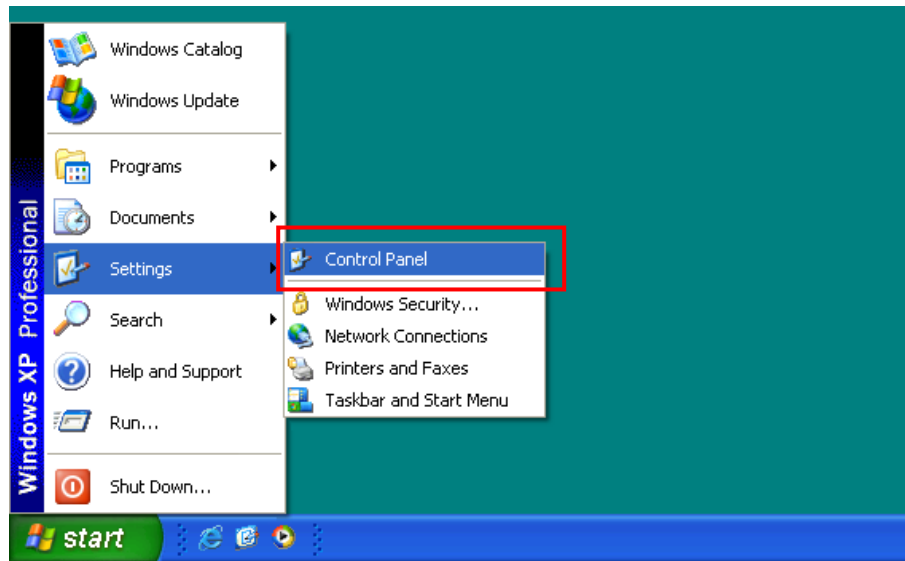
- ② After the updating, the login page of the Electronic Version Of Siku Quanshu (Wenyuange Edition) Intranet Version will be seen. You can use either “User Name and Password” or “IP address” to login.



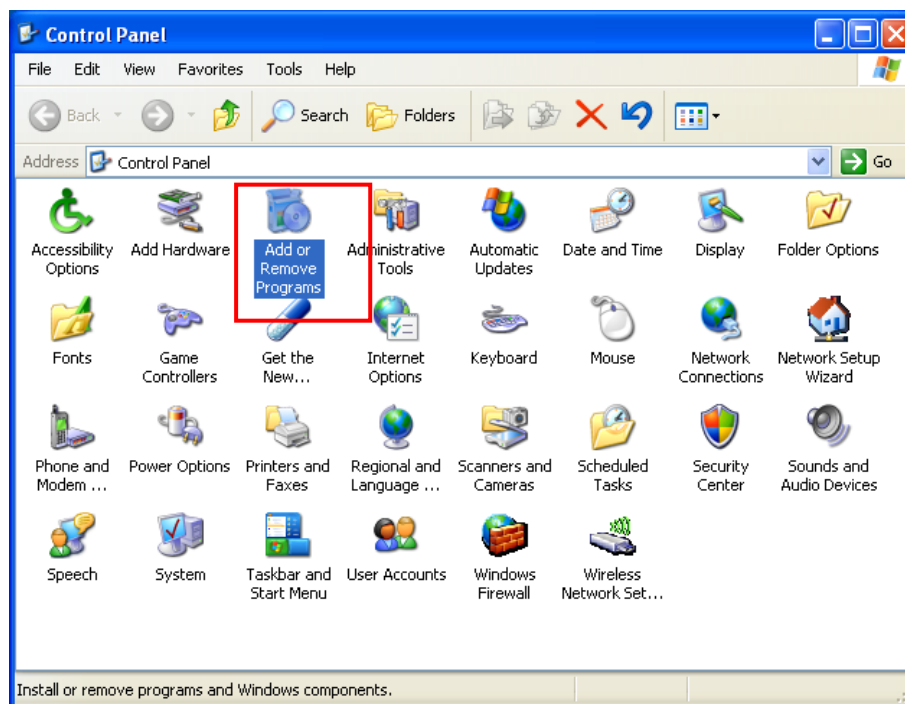
(For using instructions, please refer to document 《文淵閣四庫全書電子版》內聯網版用戶端程式使用說明)

#### 4. Uninstallation

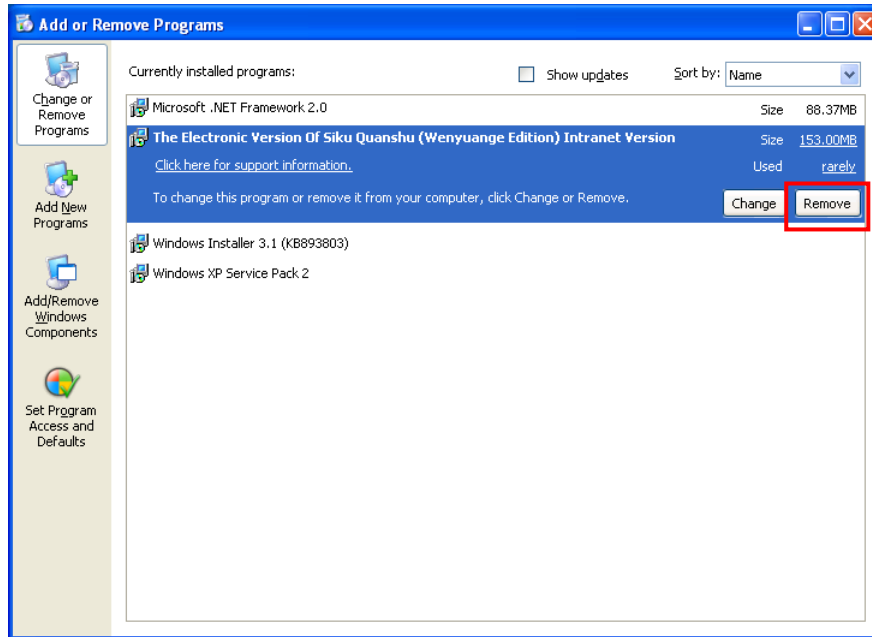
- ① Select “Start” → “Settings” → “Control Panel”.



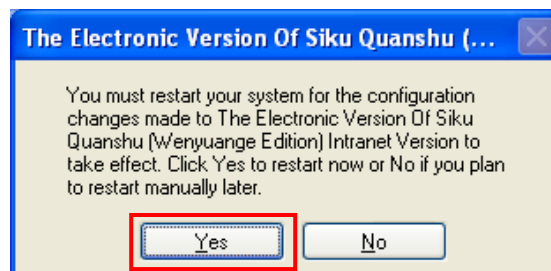
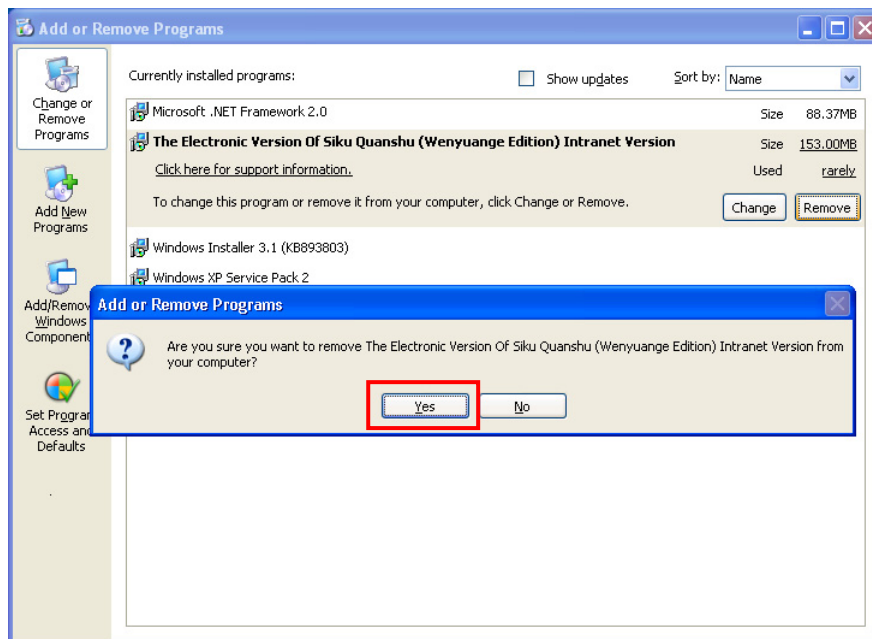
- ② In the “Control Panel” window, double-click the “Add or Remove Programs” icon.



- ③ In the “Add or Remove Programs” window, select the item “The Electronic Version Of Siku Quanshu (Wenyuange Edition) Intranet Version” and click “Remove”.



- ④ Click “Yes” to start the uninstallation process. Finally, click “Yes” to restart the computer.

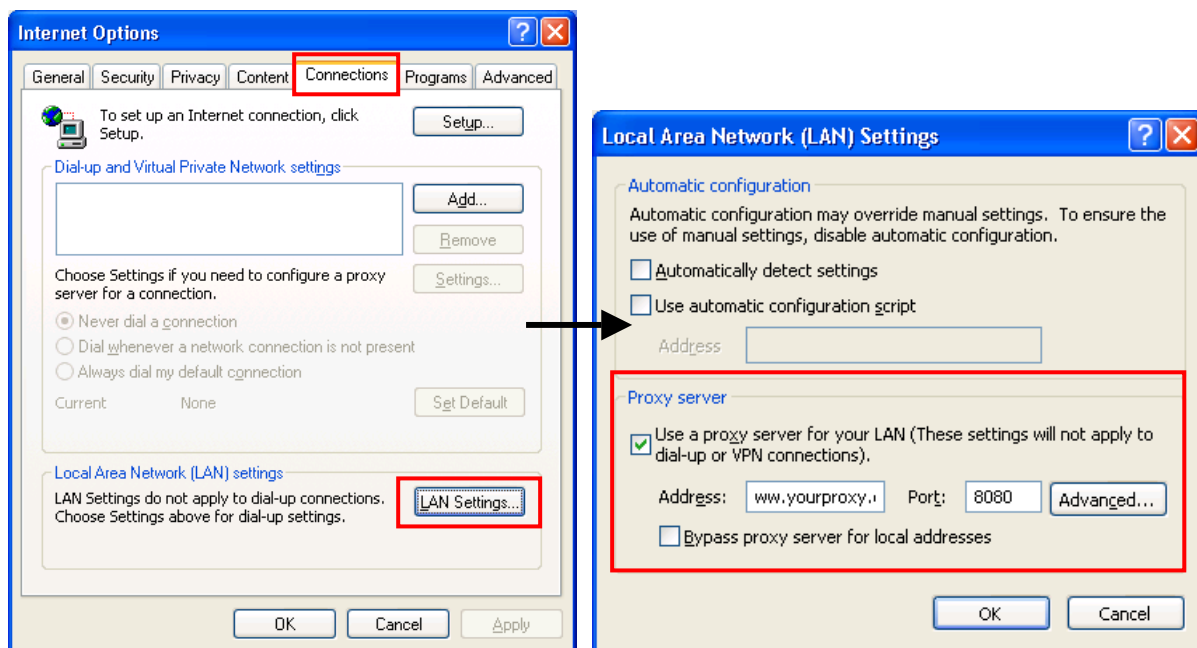




## 5. Technical Support

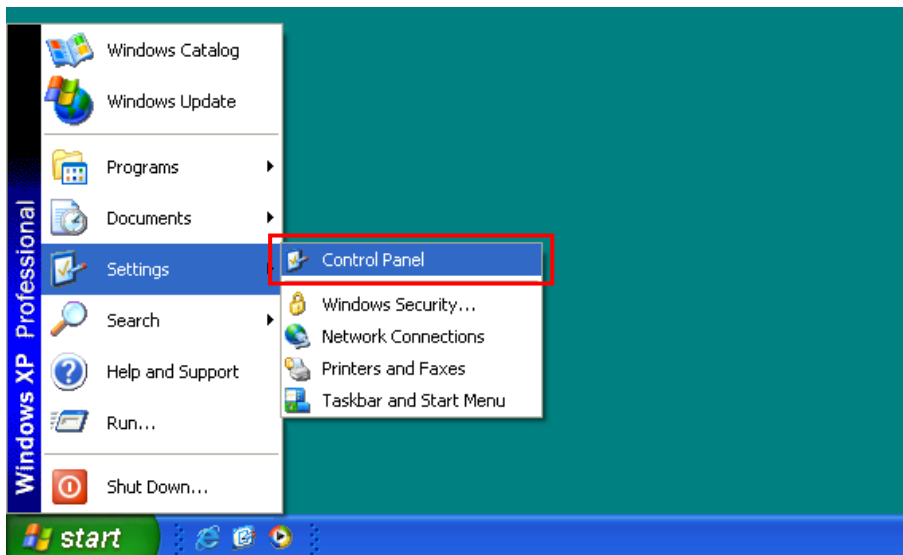
5.1 If your computer is using a proxy server to connect to the Internet, you must enter the corresponding information in your Internet Explorer.

- ① Open the Internet Explorer, on the menu bar choose “Tools” → “Internet Options” → “Connections” → “LAN Settings”.
- ② In the “Local Area Network (LAN) Settings” window, below the “Proxy server”, check the option “Use a proxy server for your LAN”, then enter your proxy address and port number. (You may ask your network support staff for information)



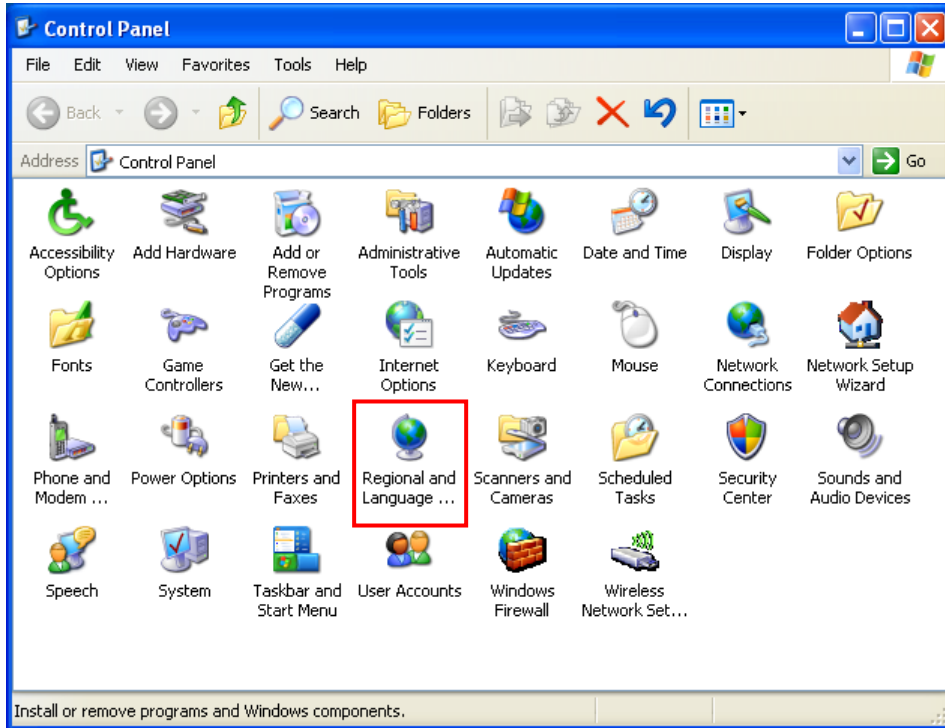
5.2 Installing East Asian Language Support under Windows XP. (You must be a member of the Administrators group on the local computer.)

- ① Select “Start” → “Settings” → “Control Panel”.





- ② In the “Control Panel” window, double-click the “Regional and Language Options” icon.



- ③ In the “Regional and Language Options” window, choose “Languages”. Below the “Supplemental language support”, check the option “Install files for East Asian languages”. Click “OK” and you will be asked to insert the Windows CD-ROM or point to a network location where the files are located. After the files are installed, you must restart your computer.

