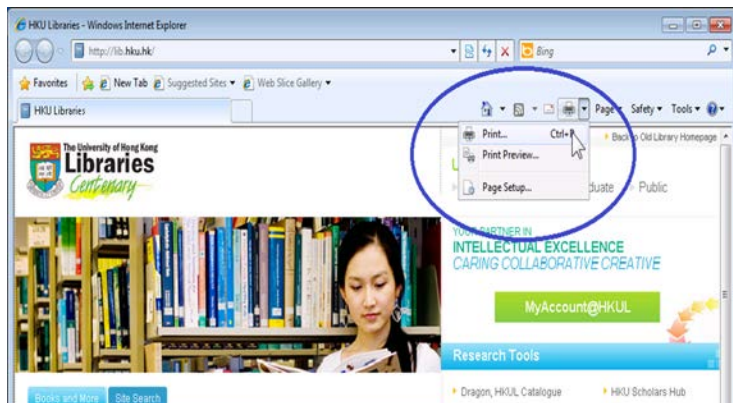


HKUL Wireless Printing

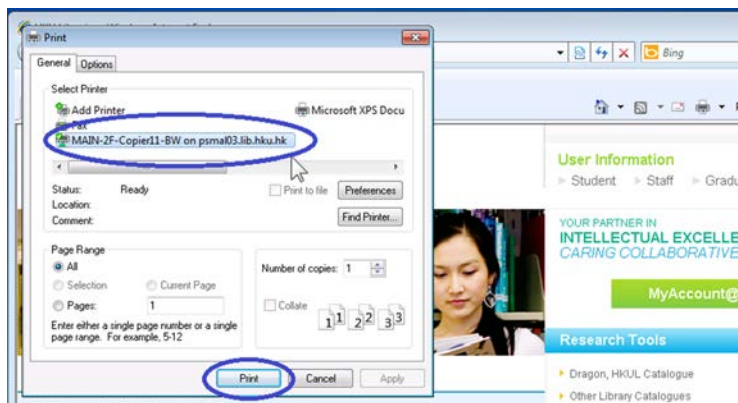
How to Print?

NOTE:

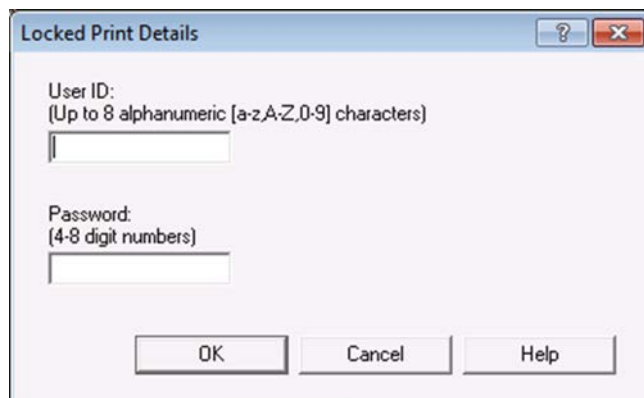
- (1) For HKU Current Staff and Student.
- (2) You **MUST** connect to "Universities WiFi", "eduroam" or "CCWLAN" for installation and printing.



Step P1:
Choose
"File>Print"
from your
working files.



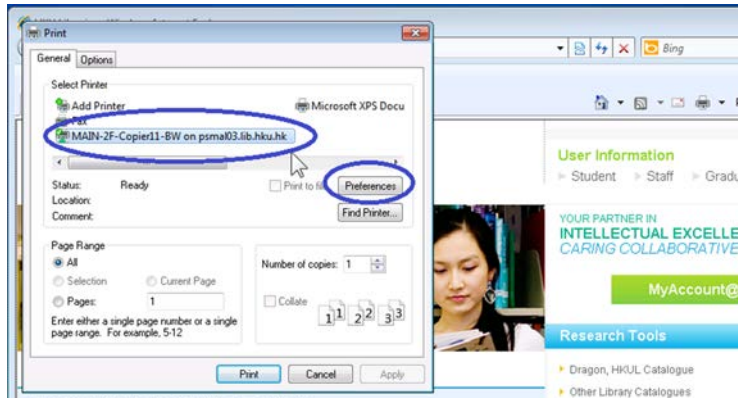
Step P2:
Select a printer,
click "Print"



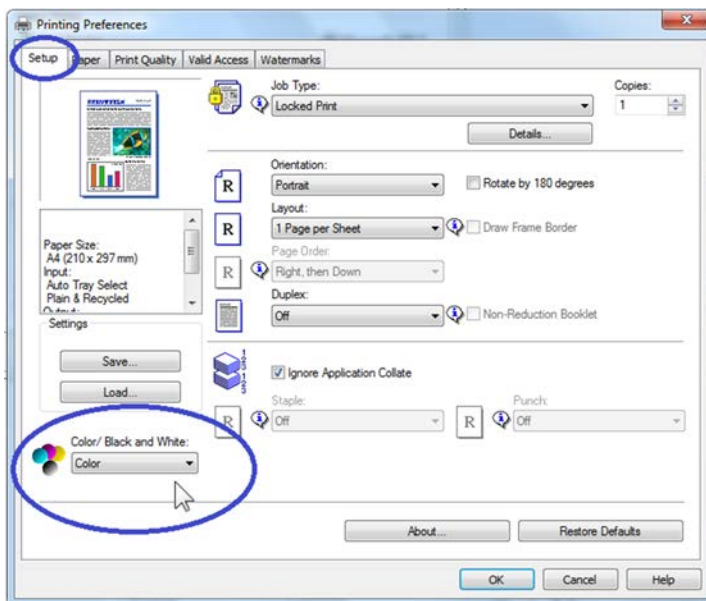
Step P3:
Input a User ID
and Password
(For one time
use). Then, click
"OK"

HKUL Wireless Printing

How to do color printing?



Step P2:
Select a printer,
click
“Preferences”



Step P2
extra:
On the “Setup”
tab of “Printing
Preferences”,
Select “Color”

HKUL Wireless Printing

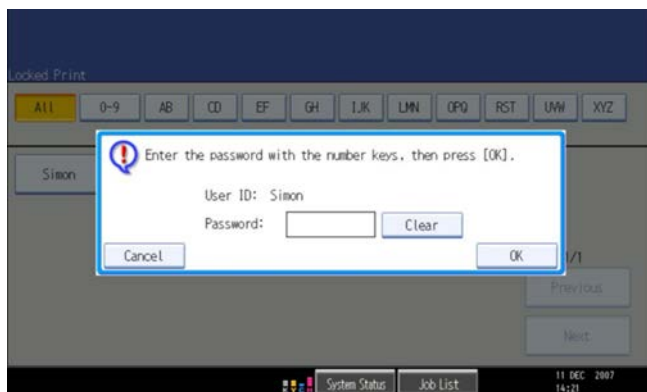
How to release print jobs?



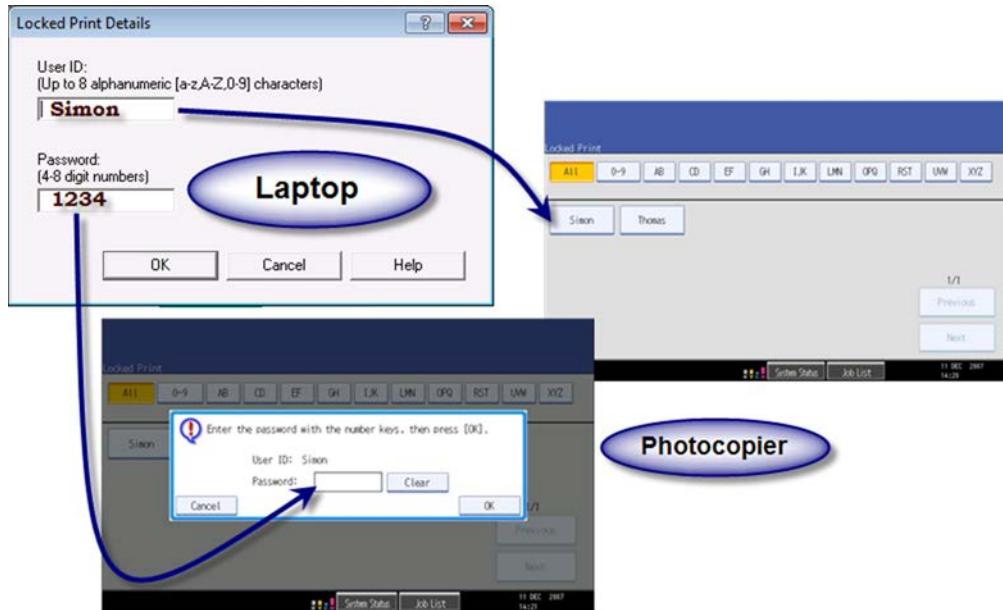
Step R1:
**Locate your
Multi-functional
Photocopier**



Step R2:
**Press "Printer"
button.
You may now choose
the User ID you have
entered earlier at
your laptop.**

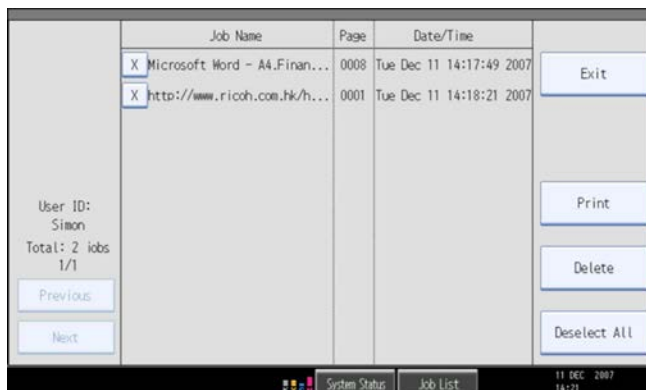


Step R3:
**Input the password
you have entered
earlier at your
laptop.**



Step R2, R3:

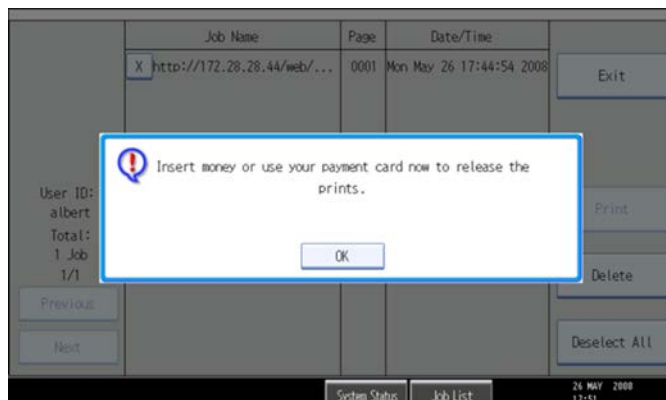
Use the **User ID** and **Password** you have entered at your laptop.



Step R4:

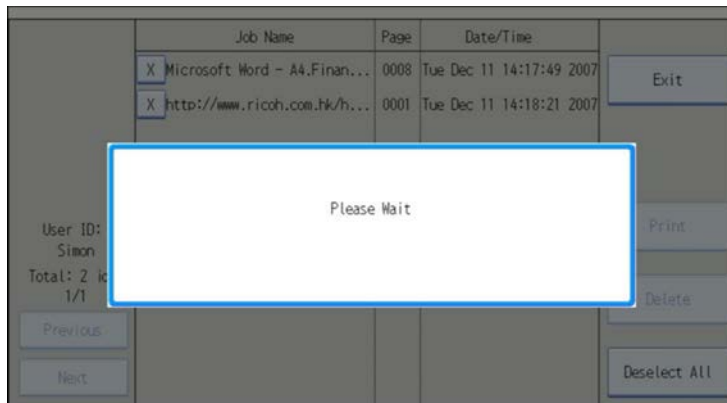
Verify jobs to be printed.

Then, press "Print".



Step R5:

Insert your Octopus / Copykey card now.



Step R6:
Printing, please wait...



Done
Collect your printouts.

Remember to get back your Octopus / Copykey card.