

WilsonWeb

1

Go to WilsonWeb and retrieve your results

1

Enter a **search statement** in WilsonWeb, e.g. > *Desertification and China*

WilsonWeb Advanced Search

FIND as:

and

and

2

From the result list, **check** those which you consider as relevant.

3 GET MARKED CLEAR MARKS FULL DISPLAY Sort By: Relevance 10 Records per Page

Browse Pages: 1 2 3 4 5 6 7 8 9 10 NEXT LAST

Suggested Subject:

- Desertification / China
- Gobi Desert (Mongolia and China)
- Environmental policy / China
- Desertification
- Sandstorms
- Paleontology / Gobi Desert (Mongolia and China)
- Reclamation of land / China

1 Mu, H., et. al., *Health-Related Quality of life and Recognition of Desertification Among Inhabitants of the Loess Plateau Region of China: Findings for City and Village Communities*. *Journal of Environmental Health* v. 70 no. 6 (January/February 2008) p. 38-43

80% 2 Leslie, J. *The Last Empire* [Cover story; *China*]. *Mother Jones* v. 33 no. 1 (January/February 2008) p. 28-39, 83-5

80% 3 Yang, G., et. al., *Oasis Land-Use Dynamics and Its Influence on the Groundwater in Arid Northwest China: A Case from Terminal Oasis of Shiyang River Basin*. *Ambio* v. 36 no. 8 (December 2007) p. 706-8

3

Click on **GET MARKED** button

4

Click on **PRINT EMAIL SAVE**

BASIC SEARCH ADVANCED SEARCH BROWSE THESAURUS SEARCH HISTORY PRINT EMAIL SAVE

SEARCH RESULTS: 3 Records found for selected In: OmniFile Full Text Mega

Revise Search Create Alert

MARKED RECORDS BACK TO ALL FULL DISPLAY CLEAR MARKS Page: 1

1 Mu, H., et. al., *Health-Related Quality of life and Recognition of Desertification Among Inhabitants of the Loess Plateau Region of China: Findings for City and Village Communities*. *Journal of Environmental Health* v. 70 no. 6 (January/February 2008) p. 38-43

80% 2 Leslie, J. *The Last Empire* [Cover story; *China*]. *Mother Jones* v. 33 no. 1 (January/February 2008) p. 28-39, 83-5

80% 3 Yang, G., et. al., *Oasis Land-Use Dynamics and Its Influence on the Groundwater in Arid Northwest China: A Case from Terminal Oasis of Shiyang River Basin*. *Ambio* v. 36 no. 8 (December 2007) p. 706-8

2

Save the results to a txt file

1

Select the appropriate options.

(Note: Find out the **unique options** for each database from **step 3.5** on page 3.)

PRINT EMAIL **SAVE** EXPORTING

Printing and Citing Options
Emailing and Citing Options
Saving, Citing and Formatting for bibliographic software
Export to RefWorks, EndNote software

Saving, Citing and Formatting for bibliographic software

Records:
☒ The 3 records in your marked set
☐ Use currently viewed record.
☐ From records 1 to 3
 (up to 100 records at a time)

Fields:
☐ Brief Citation Display (Use when "Citing" articles)
☒ All Citation Fields | Custom display
☐ Include HTML Full Text (when available)

Format: For exporting to Bibliographic Software

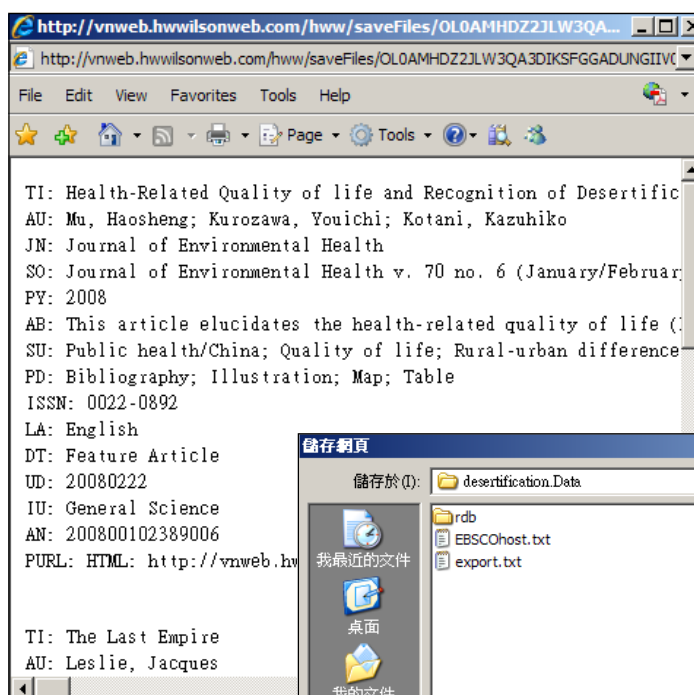
Option: ☐ Clear the marked set after the print?

Save

2

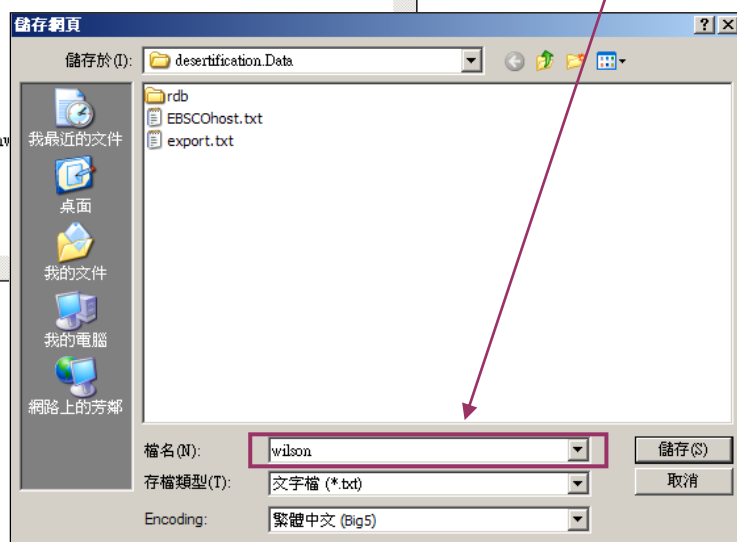
The results will be displayed in a web browser.

From the browser top bar menu: Select **File > Save As**



3

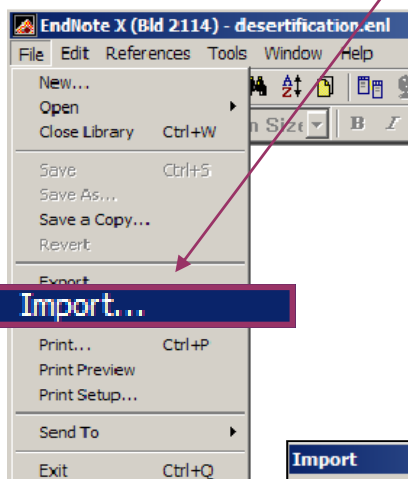
Enter a **filename** for this **txt file** and save it to an appropriate folder.



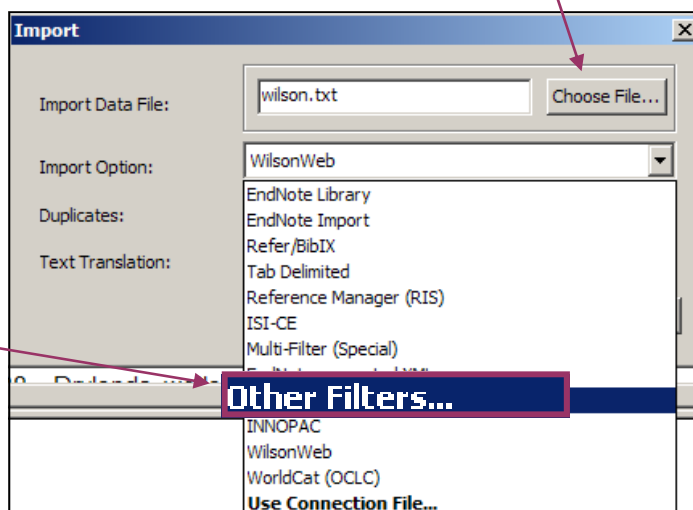
3

Import to Endnote

- 1 **Open** the Endnote library, e.g. *desertification.enl*, that you would like to import the records to. Then select from the top bar menu: **File > Import**



- 2 Choose the **txt** file that you have saved just now.

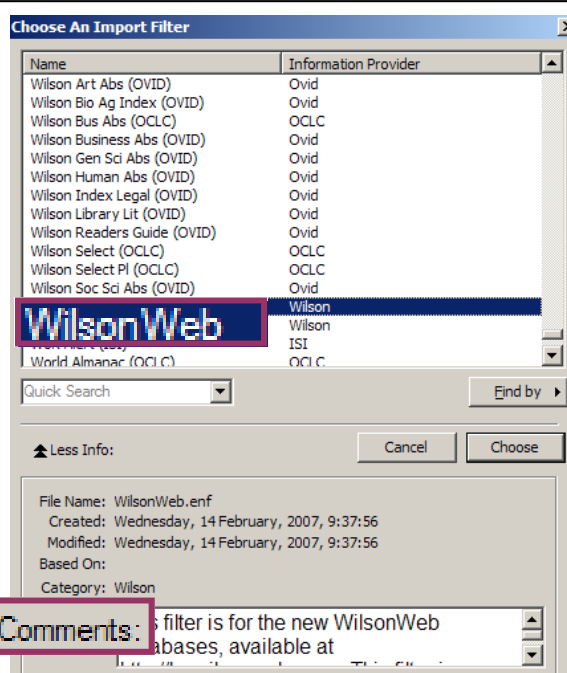


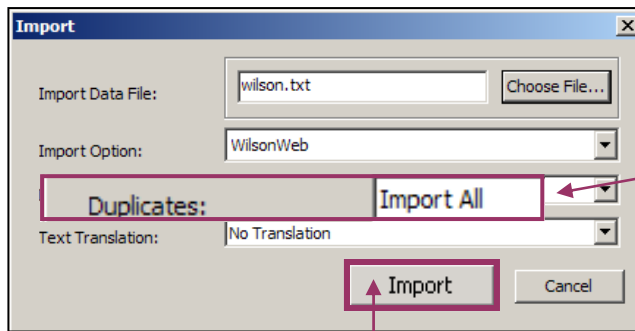
- 3 Choose the appropriate filter. If WilsonWeb is not on the list, select **Other Filters**.

- 4 Then, locate **WilsonWeb**.

5

Read the **Comments** to find out the downloading instructions for this database. This information is useful for step 2.1 on page 2.



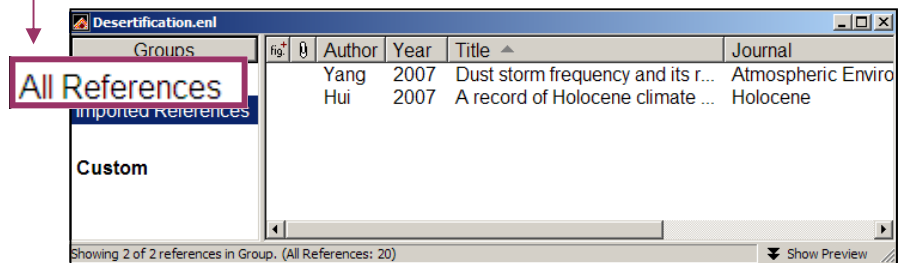


6 Select **Import All**.
Note: To remove identical records, select **Discard Duplicates**

7 Once all the options have been selected, click on **Import**.

8 The records will be imported into Endnote.

9 Click on **All References** under **Groups** to show all references in your library.



Note: You can also show all references from
Top bar menu > References > Show All References