

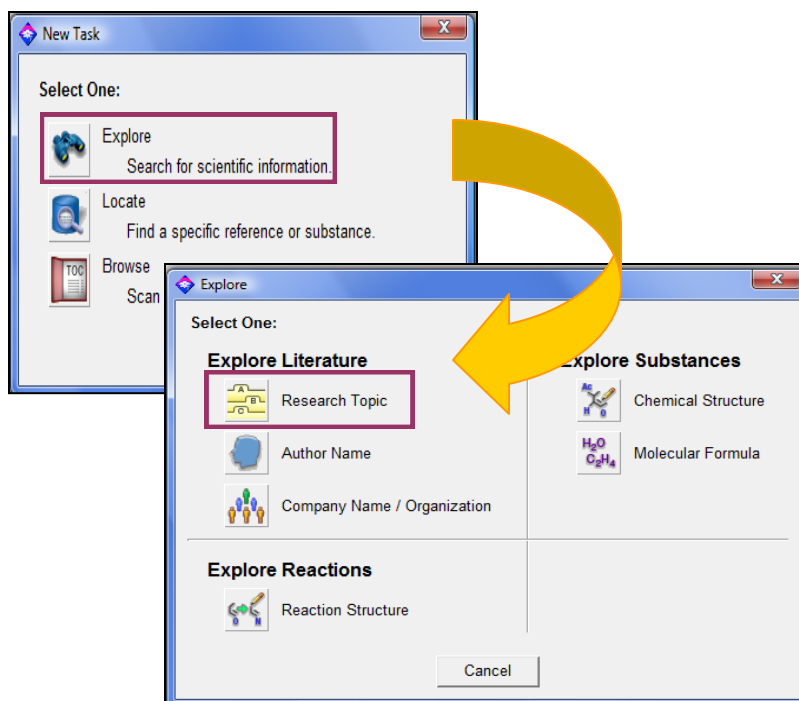
# SciFinder Scholar

1

Go to SciFinder Scholar and retrieve your results

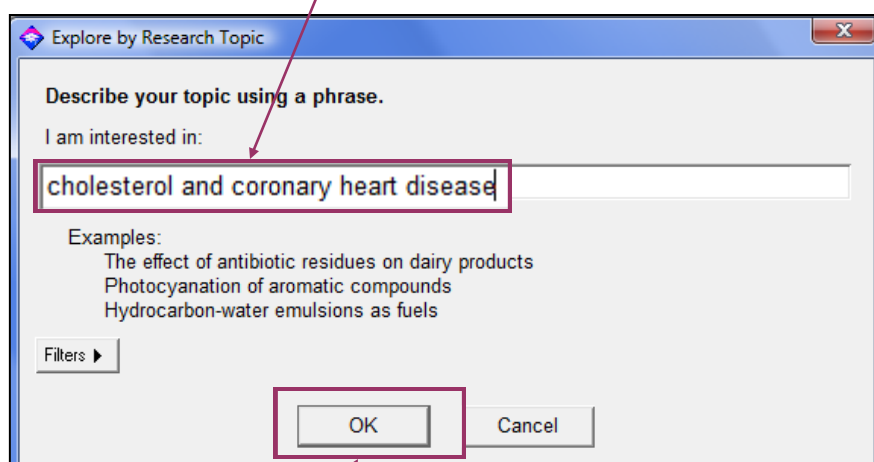
1

In SciFinder, select **Explore** in New Task, then click on **Research Topic** under Explore Literature.



2

Enter a **search statement** in the search box e.g. > *cholesterol and coronary heart disease*

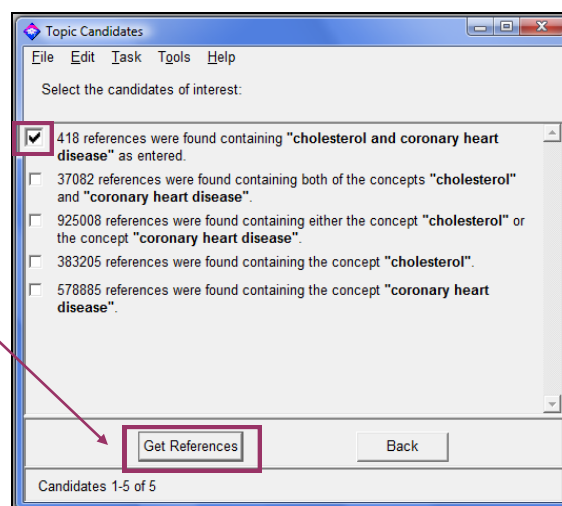


3

Click on **OK**.

4

In Topic Candidates, check the box(es) of interest and click on **Get References**.



2

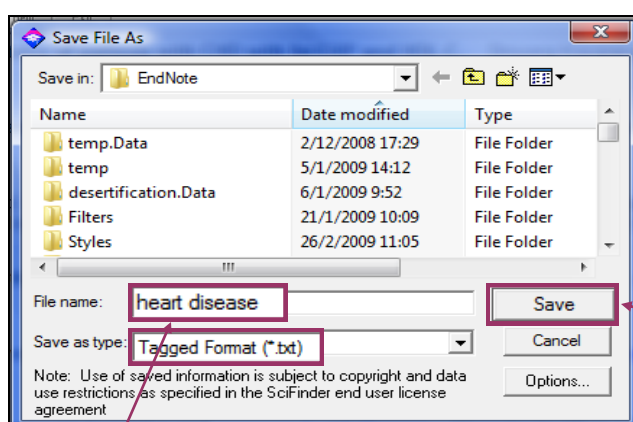
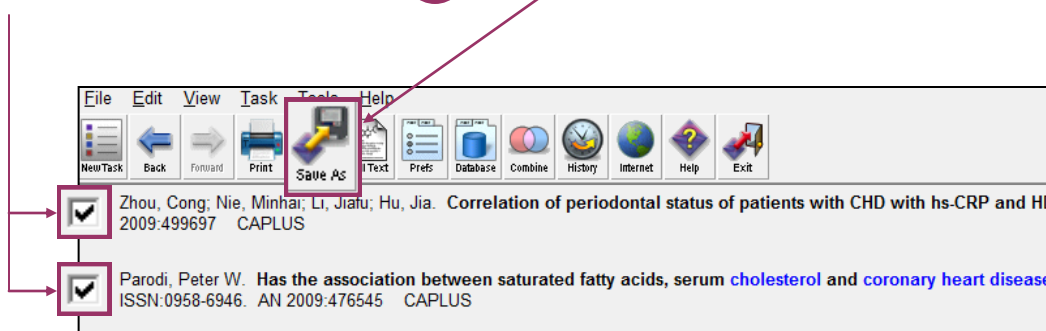
Save the results to a txt file

1

From the result list, **check** those you consider as relevant.

2

Click on **Save As**.



3

You will be prompted to save the text file. Give a filename.

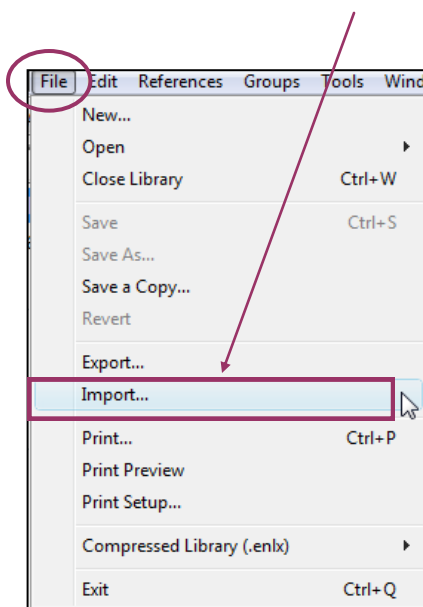
4

Click on **Save**.

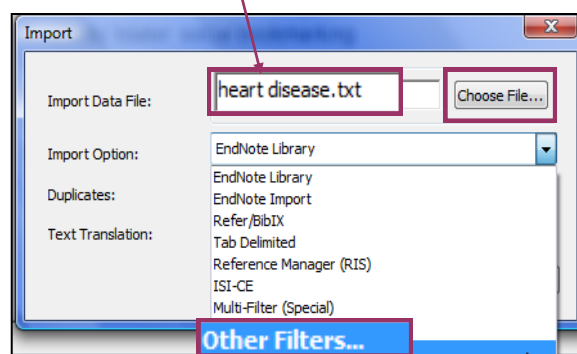
## 3

## Import to Endnote

- 1 Open the Endnote library, e.g. *guide.enl*, that you would like to import the records to. Then select **Import** from the top bar menu: **File > Import**



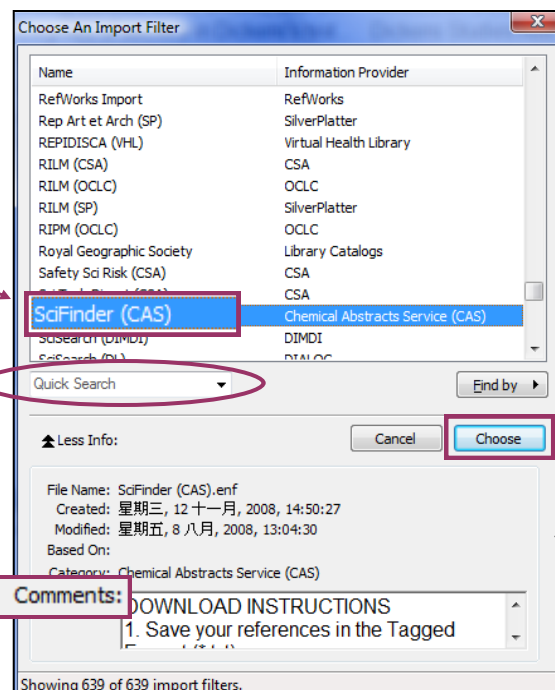
- 2 Choose the **txt** file that you have saved.



- 3 Choose the appropriate filter. If **SciFinder (CAS)** is not on the list, select **Other Filters**.

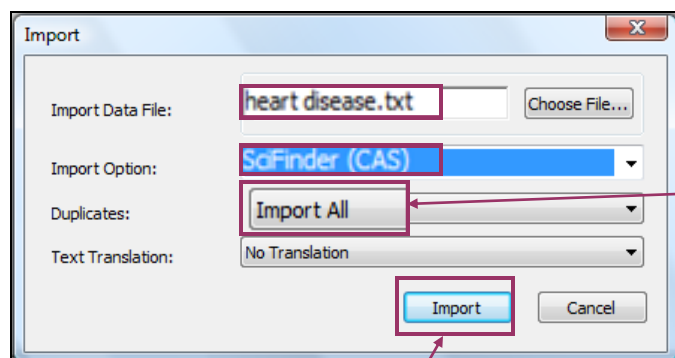
4

Locate **SciFinder (CAS)** from the list or type in **SciFinder (CAS)** in the search box and press **Enter** to locate an appropriate filter.



5

Read the **Comments** to find out the downloading instructions for this filter. Then click on **Choose**.



6

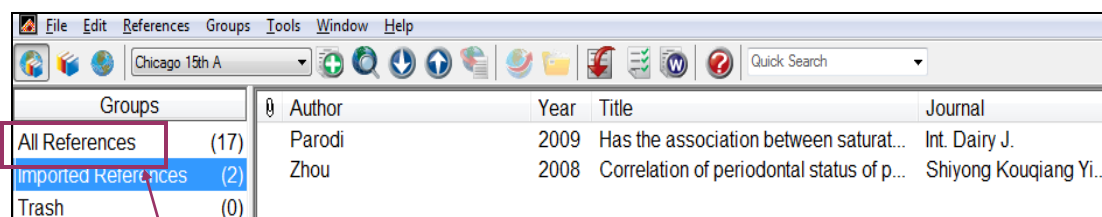
Select **Import All**.  
Note: To remove identical records, select **Discard Duplicates**.

7

Once all the options have been selected, click on **Import**.

8

The records will be duly imported into the selected Endnote library.



9

Click on **All References** under **Groups** to show all references in your library.

Note: You can also show all references from  
**Top bar menu > References > Show All References**