

PubMed

1

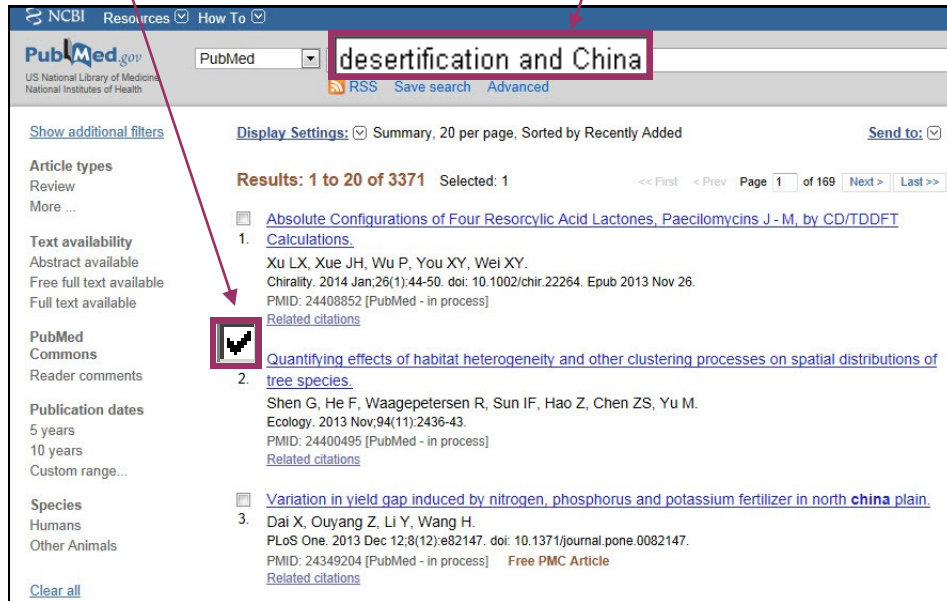
Go to PubMed and retrieve your results

1

Enter a **search statement** in PubMed, e.g. > *Desertification and China*

2

From the result list, **check** those which you consider as relevant.

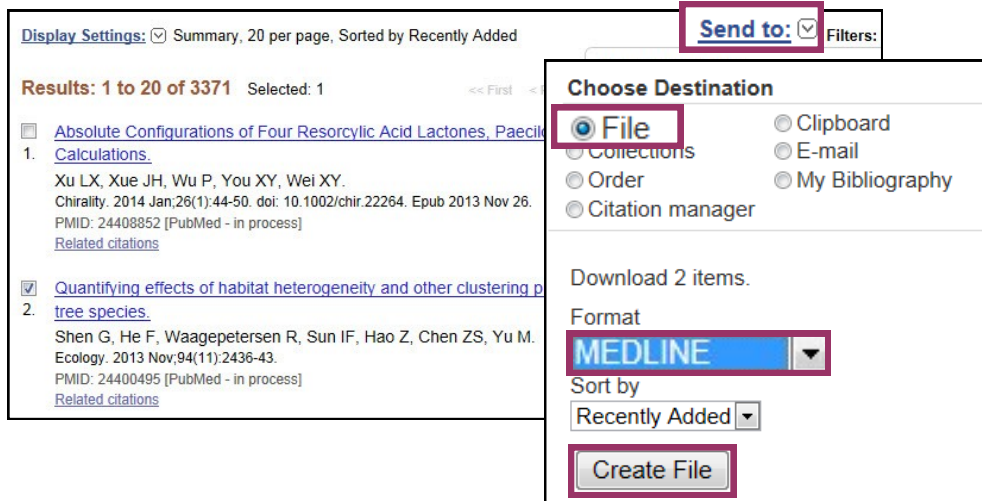


2

Save the results to a file

1

Click on **Send to**. In Choose Destination, select **File** and select **MEDLINE** as the format, then click on **Create File**.



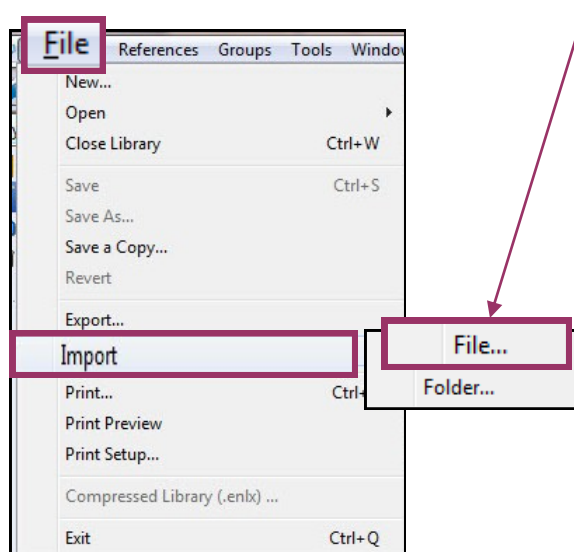
- 3 You will be prompted to **Save** the file.



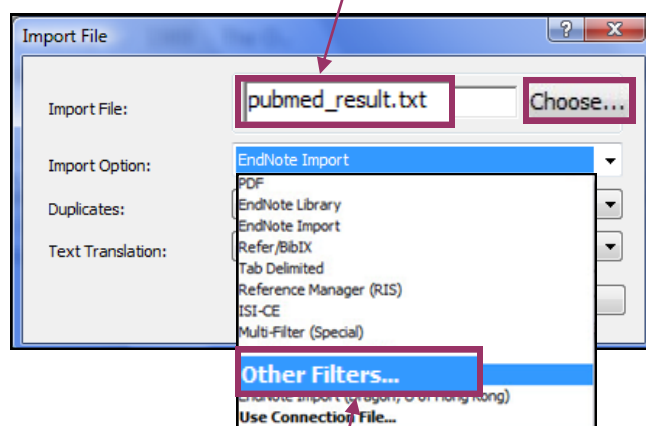
3

Import to Endnote

- 1 **Open** the Endnote library, e.g. *desertification.enl*, that you would like to import the records to. Then select from the top bar menu: **File > Import > File**

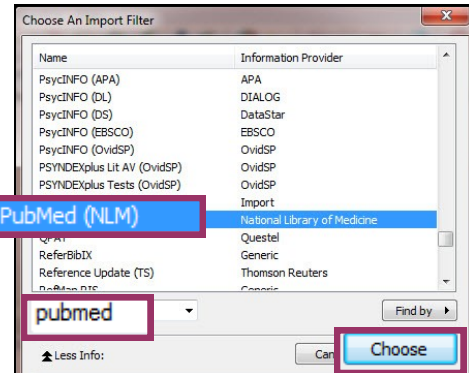


- 2 Choose the **txt** file that you have saved just now.



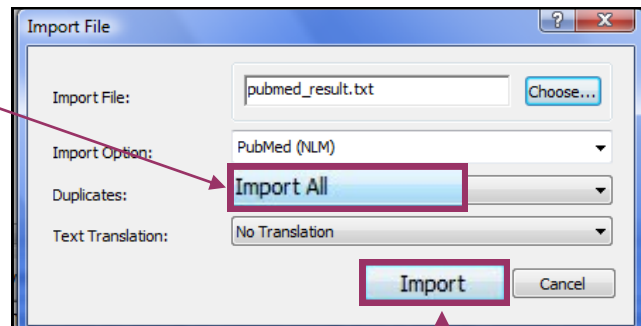
- 3 Choose the appropriate filter. If PubMed is not on the list, select **Other Filters**.

- 4 Locate **PubMed (NLM)** from the list or type in PubMed in the search box and press **Enter** to locate an appropriate filter.



- 5 Then click on **Choose**.

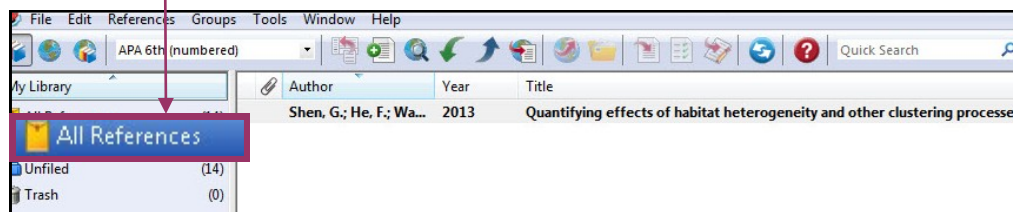
- 6 Select **Import All**.
Note: To remove identical records, select **Discard Duplicates**.



- 7 Once all the options have been selected, click on **Import**.

- 8 The records will be imported into the selected Endnote library.

- 9 Click on **All References** to show all references in your library.



Note: You can also show all references from
Top bar menu > References > Show All References