

Emerald

1

Go to Emerald and retrieve your results

- 1 Enter a **search statement** in Emerald to search.
e.g. > *Performance and training*.

Search for

Performance in All fields

Match: ☒ All ☐ Any ☐ Phrase

AND Training in All fields

Match: ☒ All ☐ Any ☐ Phrase

- 2 To view results on journal articles, click on **View all ... results**.

[View all 42517 results](#)

1 Recent Developments in Education and Engineering Training in the UK
Type: General review
Author(s): The Engineering Industry Training Board
Source: [Journal of European Industrial Training](#) Volume: 9 [Issue: 6](#) 1985
 [OpenURL](#) | [Abstract](#) | [Reprints & permissions](#)

- 3 From the result list, **check** those which you consider as relevant.

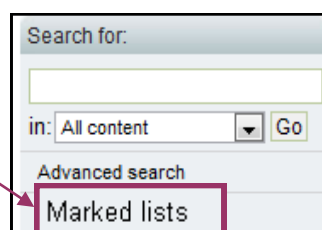
- 4 Click on **Go** to add all your selected results to the marked list.

[Select all](#) | Add to the marked list: **Go**

Icon key: You have access to this item Backfiles Earlycite Abstract only

1 Recent Developments in Education and Engineering Training in the UK
Type: General review
Author(s): The Engineering Industry Training Board
Source: [Journal of European Industrial Training](#) Volume: 9 [Issue: 6](#) 1985
 [OpenURL](#) | [Abstract](#) | [Reprints & permissions](#)

- 5 Click on **Marked lists**.

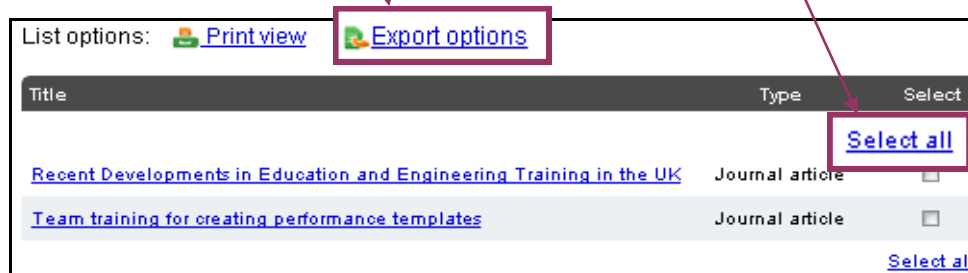


2

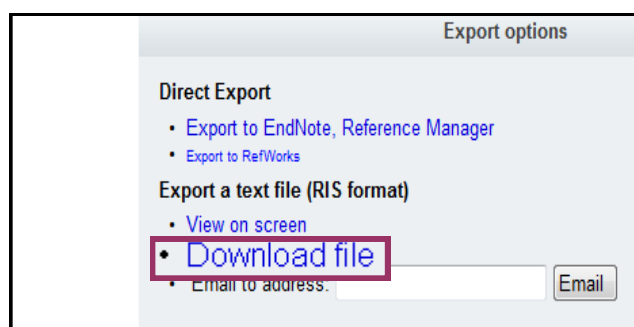
Save the results to a txt file

- 1 Click on **Select All** to select all your results.

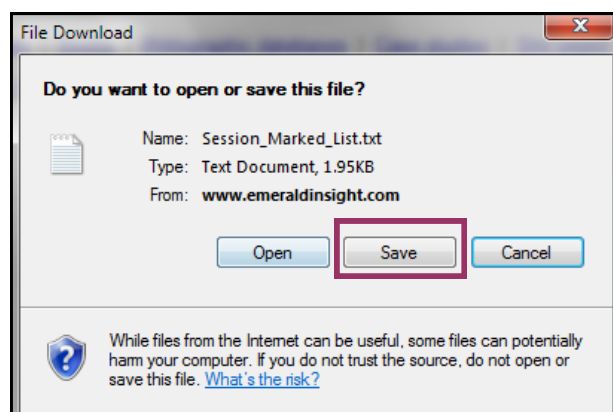
- 2 Click on **Export options**.



- 3 In Export options, click on **Download file**.



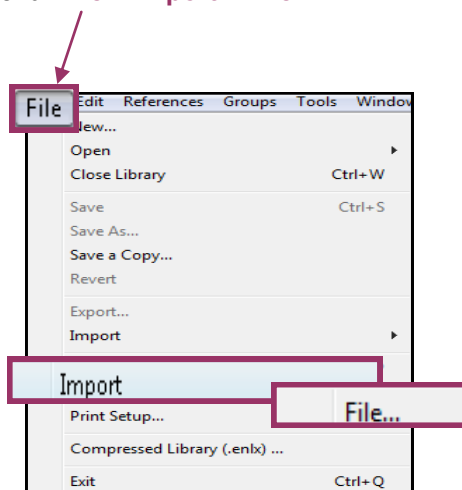
- 4 You will be prompted to save the file. Click on **Save**.



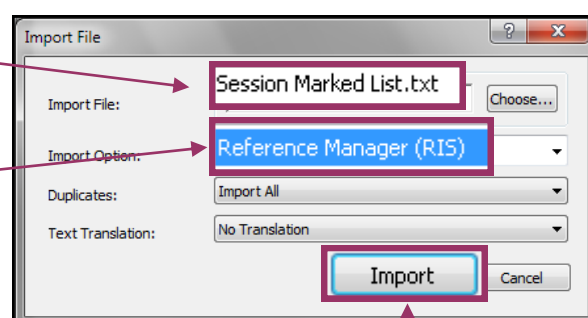
3

Import to Endnote

- 1 **Open** the Endnote library to import the txt file to Endnote. Select **Import** from the top bar menu: **File > Import > File**.

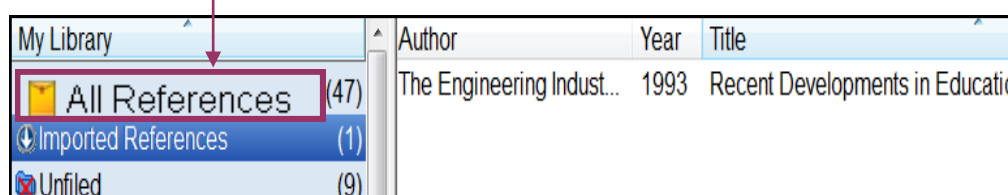


- 2 Select the **txt file** that you have saved just now.
- 3 Select **Reference Manager (RIS)** as the filter.



- 4 Once all the options have been selected, click on **Import**.

- 5 The records will be duly imported into the selected Endnote library.
- 6 Click on **All References** to show all references in your library.



Note: You can also show all references from **Top bar menu > References > Show All References**.