

# WilsonWeb

1

Go to WilsonWeb and retrieve your results

1

Enter a **search statement** in WilsonWeb, e.g. > *Desertification and China*

WilsonWeb Advanced Search

FIND  as:

and

and

2

From the result list, **check** those which you consider as relevant.

3 GET MARKED CLEAR MARKS FULL DISPLAY Sort By: Relevance 10 Records per Page

Browse Pages: 1 2 3 4 5 6 7 8 9 10 NEXT LAST

Suggested Subject: Desertification / China, Gobi Desert (Mongolia and China), Environmental policy / China, Desertification, Sandstorms, Paleontology / Gobi Desert (Mongolia and China), Reclamation of land / China

1 Mu, H., et. al., Health-Related Quality of life and Recognition of **Desertification Among Inhabitants of the loess Plateau Region of China: Findings for City and Village Communities**. *Journal of Environmental Health* v. 70 no. 6 (January/February 2008) p. 38-43

80% 2 Leslie, J. *The Last Empire* [Cover story; **China**]. *Mother Jones* v. 33 no. 1 (January/February 2008) p. 28-39, 83-5

80% 3 Yang, G., et. al., *Oasis Land-Use Dynamics and Its Influence on the Groundwater in Arid Northwest China: A Case from Terminal Oasis of Shiyang River Basin*. *Ambio* v. 36 no. 8 (December 2007) p. 706-8

3

Click on **GET MARKED**

4

Click on **EXPORTING/CITING**

BASIC SEARCH ADVANCED SEARCH BROWSE THESAURUS SEARCH HISTORY PRINT EMAIL SAVE EXPORTING / CITING

SEARCH RESULTS: 3 Records found for selected In: OmniFile Full Text Mega

Revise Search Create Alert

MARKED RECORDS BACK TO ALL FULL DISPLAY CLEAR MARKS Page: 1

1 Mu, H., et. al., Health-Related Quality of life and Recognition of **Desertification Among Inhabitants of the loess Plateau Region of China: Findings for City and Village Communities**. *Journal of Environmental Health* v. 70 no. 6 (January/February 2008) p. 38-43

80% 2 Leslie, J. *The Last Empire* [Cover story; **China**]. *Mother Jones* v. 33 no. 1 (January/February 2008) p. 28-39, 83-5

80% 3 Yang, G., et. al., *Oasis Land-Use Dynamics and Its Influence on the Groundwater in Arid Northwest China: A Case from Terminal Oasis of Shiyang River Basin*. *Ambio* v. 36 no. 8 (December 2007) p. 706-8

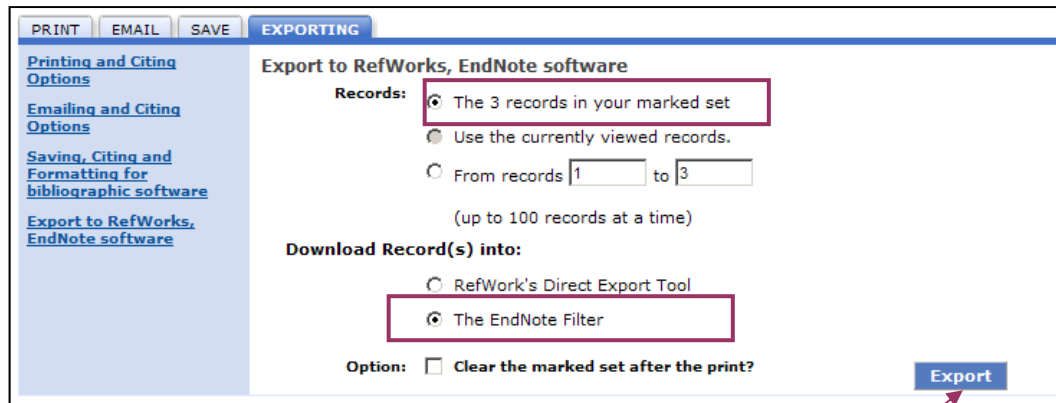
## 2

### Direct export the results to Endnote

1

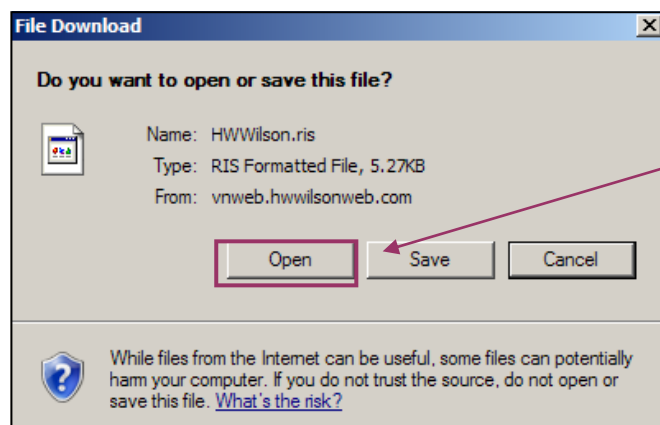
**Select** the appropriate options.

(Note: Find out the **unique options** for each database from **step 2.7** on page 3.)



2

Click on **Export**

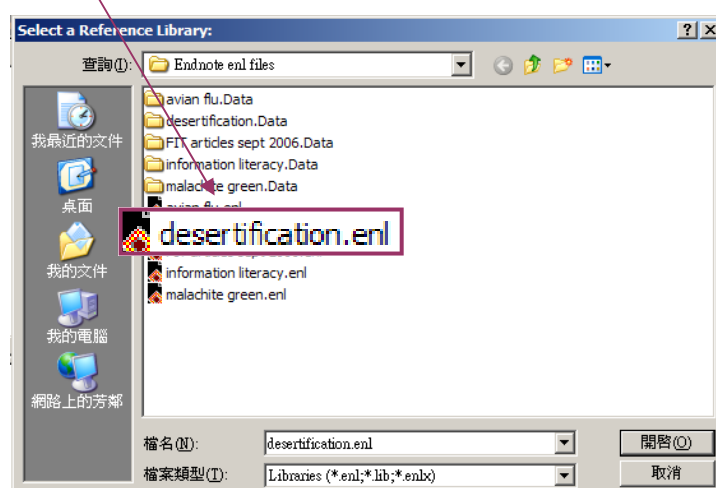


3

Click on **Open**

4

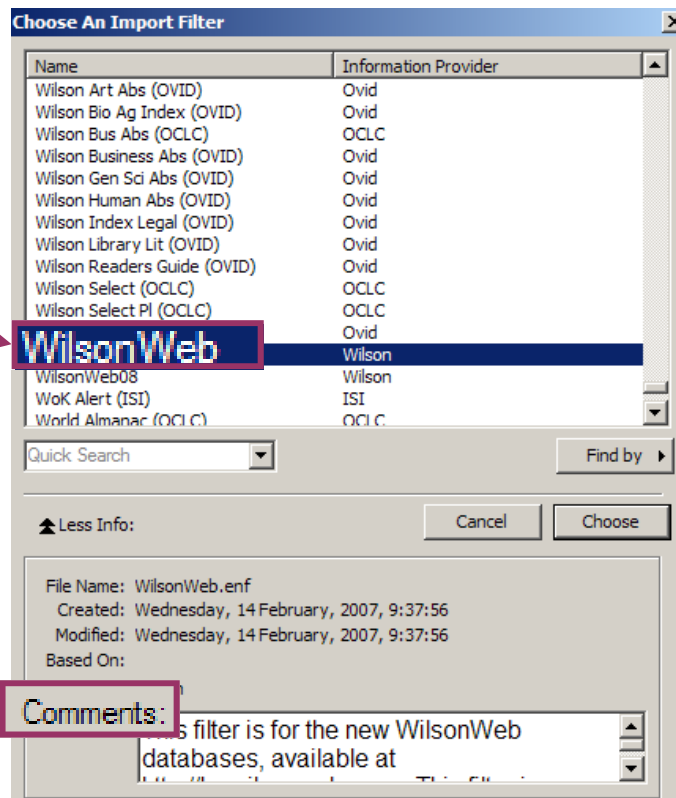
You will be prompted to **open** an appropriate **enl** file.



- 5 You will be prompted to choose an appropriate filter

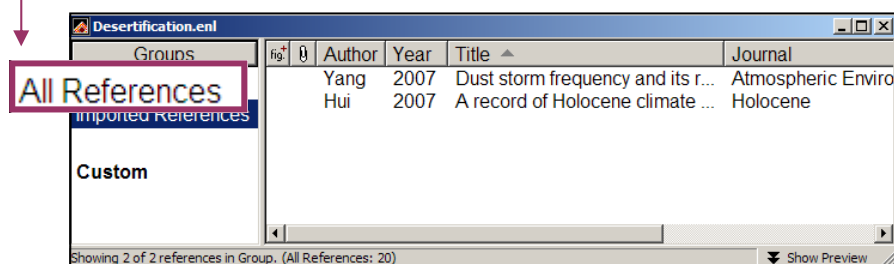
- 6 Then, locate **WilsonWeb**.

- 7 Read the **Comments** to find out the downloading instructions for this database. This information is useful for step 2.1 on page 2.



- 8 The records will be duly imported into the selected Endnote library.

- 9 Click on **All References** under **Groups** to show all references in your library.



Note: You can also show all references from  
**Top bar menu > References > Show All References**