

Scopus

1

Go to Scopus and retrieve your results

1

Enter a **search statement** in Scopus, e.g. > *Desertification and China*

SciVerse Scopus

Hub | ScienceDirect | **Scopus** | SciTopics | Applications [Register](#)

[Search](#) | [Sources](#) | [Analytics](#) | [My alerts](#) | [My list](#) | [My settings](#)

Document search | [Author search](#) | [Affiliation search](#) | [Advanced search](#)

Search for: **desertification AND china** in [Article Title, Abstract, Keywords](#)

E.g., heart attack AND stress

[Add search field](#) | [Search](#)

Limit to:

Date Range (inclusive)

☒ Published [All years](#) to [Present](#)

☐ Added to Scopus in the last [7](#) days

Document Type

[All](#)

Subject Areas

☒ Life Sciences (> 4,300 titles)

☒ Physical Sciences (> 7,200 titles)

☒ Health Sciences (> 6,800 titles. 100% Medline coverage)

☒ Social Sciences & Humanities (> 5,300 titles)

[Search](#)

2

Click on **Search**.

3

From the result list, **check** those which you consider as relevant.

4

Once all records are marked, click on **Export**.

Document results: 919 | [Show all abstracts](#) | Go to page: [1](#) of 46 [Go](#) | [Next >](#)

With selected:

☐ All ☒ Download PDF [Export](#) ☐ Print ☐ Email

☐ Page [Create bibliography](#) [Add to My List](#) [View citation overview](#)

[View citations](#) [View references](#)

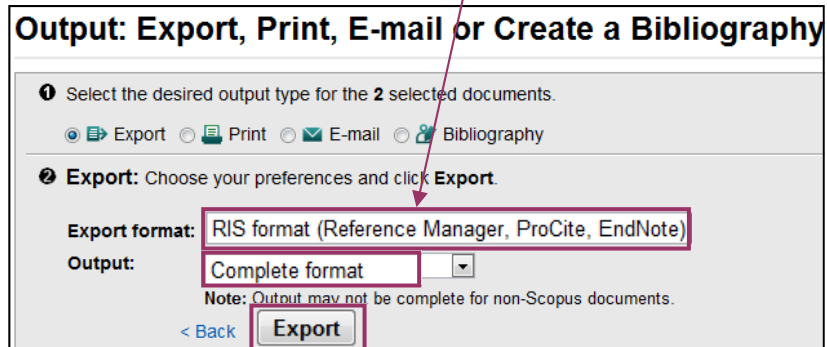
Sort by [Date \(Newest\)](#)

	Document title	Author(s)	Date	Source title	Citations
<input checked="" type="checkbox"/>	An elephant in the planning room: Political demography and its influence on sustainable land-use planning in drylands	Orenstein, D.E., Jiang, L., Hamburg, S.P.	2011	<i>Journal of Arid Environments</i> 75 (6), pp. 596-611	0
<input type="checkbox"/>	Climate and environmental changes during the past millennium in central western Guizhou, China as recorded by Stalagmite ZJD-21	Kuo, T.-S., Liu, Z.-Q., Li, H.-C., Wan, N.-J., Shen, C.-C., Ku, T.-L.	2011	<i>Journal of Asian Earth Sciences</i> 40 (6), pp. 1111-1120	0
<input type="checkbox"/>	Double sampling for stratification for the monitoring of sparse tree populations: The example of <i>Populus euphratica</i> Oliv. forests at the lower reaches of Tarim River, Southern Xinjiang, China	Lam, T.Y., Kleinn, C., Coenradie, B.	2011	<i>Environmental Monitoring and Assessment</i> 175 (1-4), pp. 45-61	0

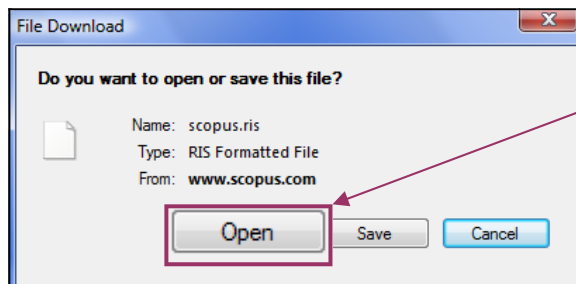
2

Direct export the results to Endnote

- 1 Change the **Export format** to **RIS format (Reference Manager, ProCite, EndNote)**.



- 2 Select **Complete format** in **Output** and click on **Export**.

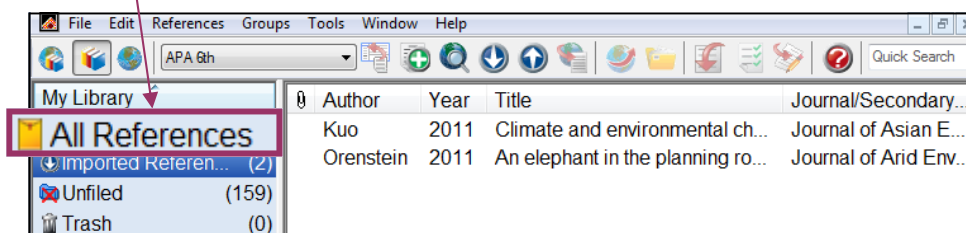
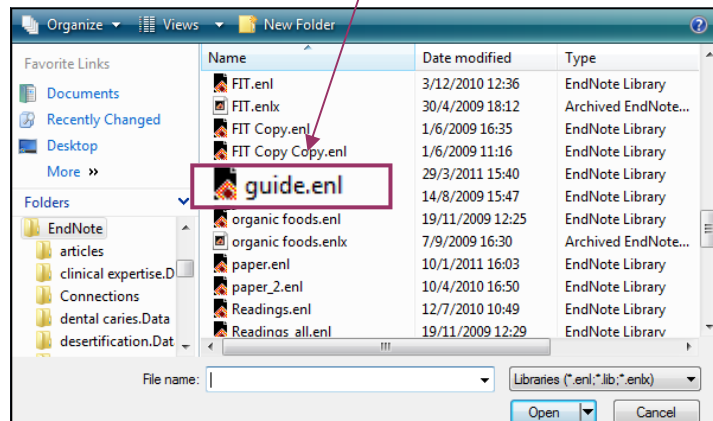


- 3 You will be prompted to **open** the **ris** file.

- 4 Then you will be prompted to **open** an appropriate **enl** file.

- 5 The records will be duly imported into the selected Endnote library.

- 6 Click on **All References** to show all references in your library.



Note: You can also show all references from
Top bar menu > References > Show All References