

ScienceDirect

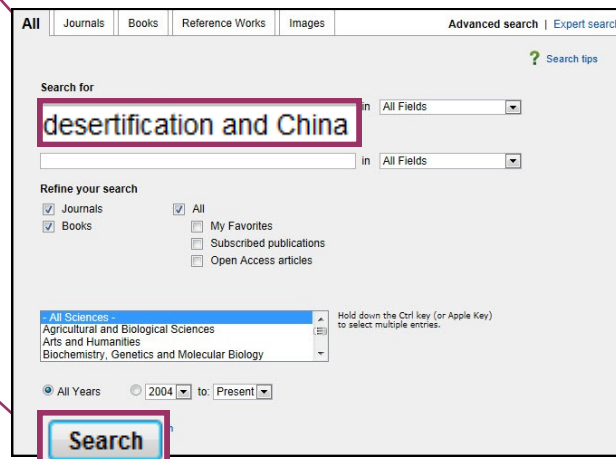
1

Go to ScienceDirect and retrieve your results

1 Click on **Advanced Search** in ScienceDirect.



2 Enter a **search statement** e.g. > *Desertification and China*

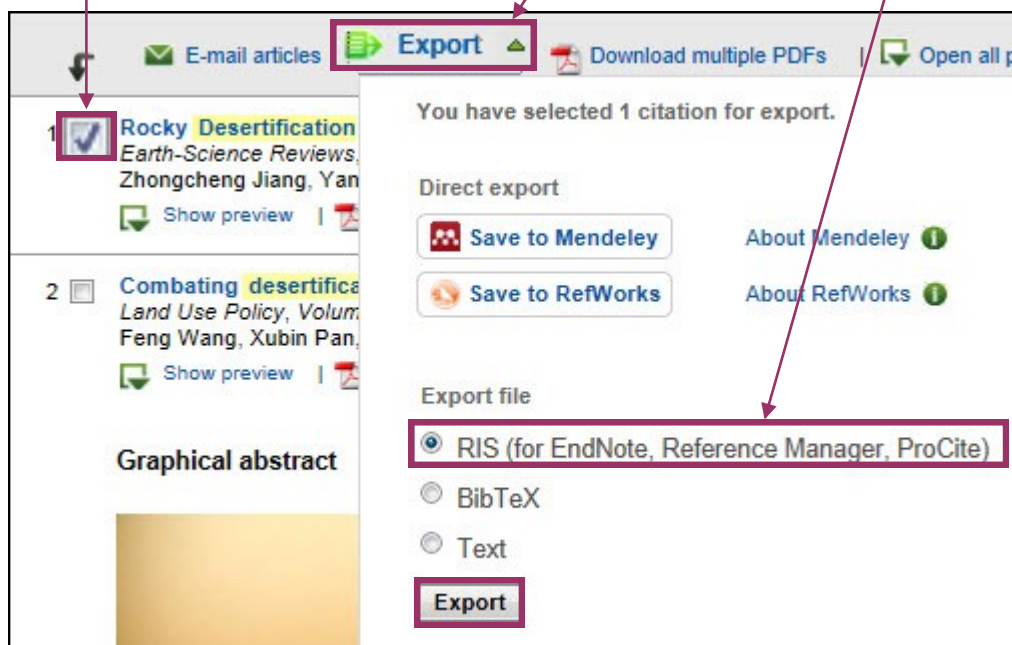


3 Click on **Search**.

4 From the result list, **check** those which you consider as relevant.

5 Once all records are marked, click on **Export**.

6 Under Export file, choose **RIS**, then click on **Export**.



2

Direct export the results to Endnote

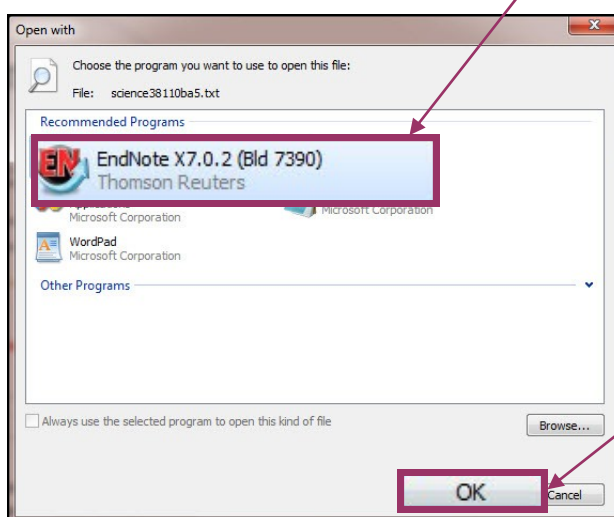
- 1 When prompted, click on **Save**.



- 2 You will be prompted to open the txt.file, click on the pull down menu for **Open** and then select **Open with**.



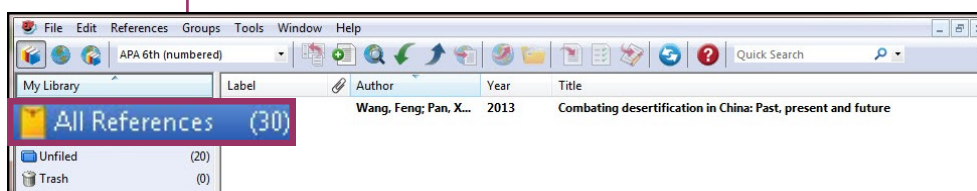
- 3 From the "Open with" dialog, select the program **Endnote**.



- 4 Click on **OK** to proceed.

- 5 The records will be duly imported into the selected Endnote library.

- 6 Click on **All References** to show all references in your library.



Note: You can also show all references from
Top bar menu > References > Show All References