

Project Muse

1

Go to Project Muse and retrieve your results

1

Enter a **search statement** in **Project Muse** e.g. > *desertification and China*

Project MUSE®
Today's Research. Tomorrow's Inspiration.

Article Search Browse Journals

Project MUSE » Article Search »

Advanced Article Search

Search for:

desertification and china in All Fields (w/text)

AND

in All Fields (w/text)

Add a Row

Search

2

Click on **search**.

3

From the result list, **check** those which you consider as relevant.

4

Then, click on **Save Marked Results**.

Mark/Clear All Results on Page Save Marked Results

1. ☒ **The Security Implications of Climate Change**
Podesta, John.
Ogden, Peter.
The Washington Quarterly, Volume 31, Number 1, Winter 2007-08, pp. 115-138 (Article)
HTML Version | PDF Version (247k) [OpenURL at Your Local Institution]
...induced drought, desertification, and sea-level rise. Already,..., such as those between China, India, and Pakistan. The tracts of farmland and grassland....contested borders of China and India, an eruption of severe social or...

Subject Headings:
Climatic changes -- Political aspects.
Security, International.

Within the next 30 years, climate change is expected to cause destabilizing migration, massive food and deadly disease outbreaks that will present serious security challenges not only to directly affected international community.

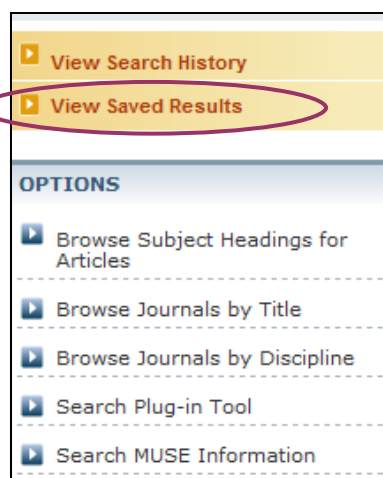
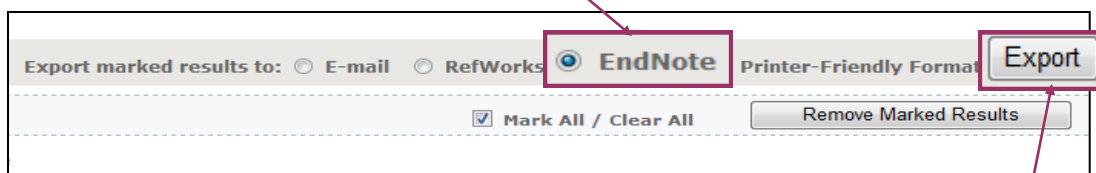
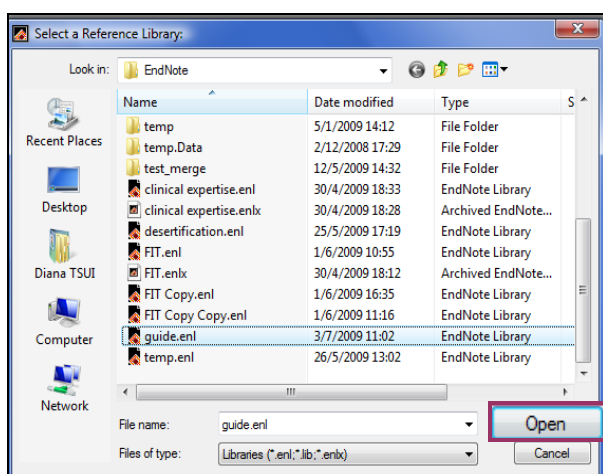
2. ☒ **Expert Advice and Desertification Policy: Past Experience and Current Challenges**
Martello, Marybeth Long.
Global Environmental Politics, Volume 4, Number 3, August 2004, pp. 85-106 (Article)

2 new results have been saved.

5

Click on **Close Window** when prompted.

Close Window

2**Direct export the results to Endnote****1**Click on **View Saved Results**.**2**Select **EndNote** in Export marked results to.**3**Then, click on **Export**.**4**Locate your endnote library when prompted and click on **Open**.**5**

The records will be duly imported into the selected Endnote library.

