

Ovid Databases

1

Go to Ovid and retrieve your results

- 1 Enter a **search statement** in Ovid to search.
e.g. > *Desertification and China*

Basic Search | Find Citation | Search Tools | Search Fields | Advanced Search

Selected Resources

Ovid Resources: [Ovid MEDLINE\(R\) 1950 to June Week 4 2010](#), [HKU Journals@Ovid](#)

☒ Keyword ☐ Author ☐ Title ☐ Journal

Desertification and China

[Limits](#) (Click to expand)

Search

3

- From the result list, **check** those which you consider as relevant.

2

- Click on **Search**.

Select Range

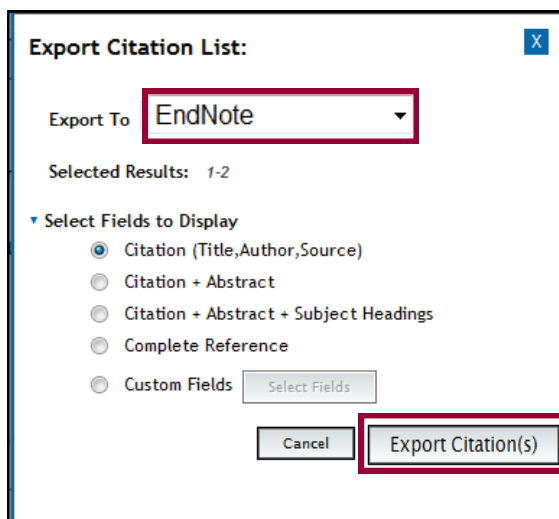
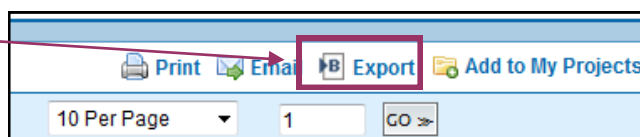
Print Email Export Add to My

Clear Selected View: Title Citation 10 Per Page 1 GO

<input checked="" type="checkbox"/>	Database	Ovid MEDLINE(R)
	Unique Identifier	19662841
	Authors	Li ZK , Zhang XJ , Yang ZY , Shi LN , Wang YM , Feng LL , Lu YX .
	Authors Full Name	Li, Zheng-Kui. Zhang, Xiao-Jiao. Yang, Zhu-You. Shi, Lu-Na. Wang, Yue-Ming. Feng, Lu-Lu. Lu, Yi-Xiu.
	Title	[Ecological engineering experiment for Jinshan Lake in Zhenjiang base on techniques of immobilized nitrogen cycling bacteria]. [Chinese]
	Source	Huanjing Kexue/Environmental Science. 30(6):1626-31, 2009 Jun 15.
	Publication Type	English Abstract. Journal Article. Research Support, Non-U.S. Gov't.
		+ My Projects
<input checked="" type="checkbox"/>	Database	Ovid MEDLINE(R)
	Unique Identifier	20140673
	Authors	Liu C , Lu J , Yin R .
	Authors Full Name	Liu, Can. Lu, Jinzhi. Yin, Runsheng.
	Title	An estimation of the effects of China's Priority Forestry Programs on farmers' income.
	Source	Environmental Management. 45(3):526-40, 2010 Mar.

2 Direct export the results to Endnote

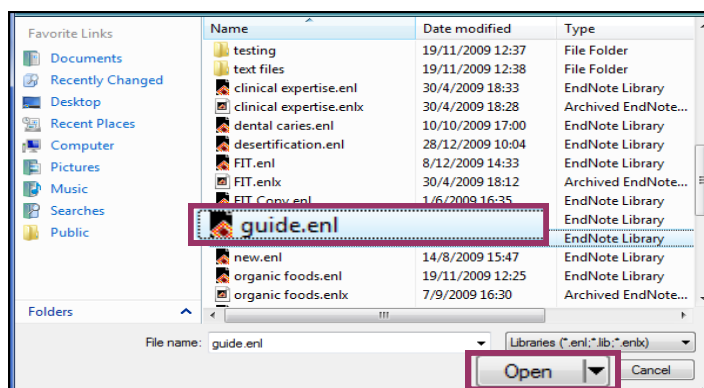
1 Click on **Export**.



2 In **Export Citation List**, change the option to **Endnote**.

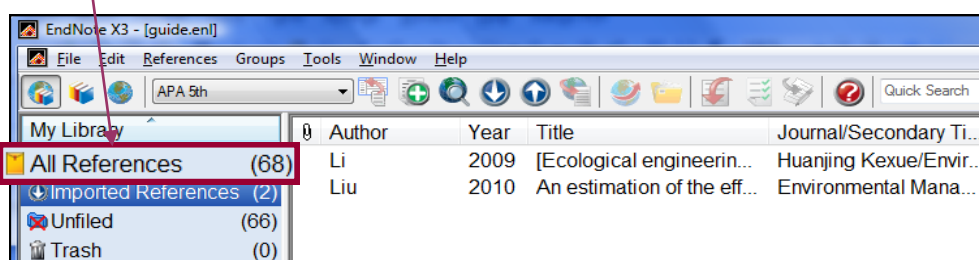
3 Click on **Export Citation (s)**.

4 Locate your endnote library and click on **Open**.



5 The records will be duly imported into the selected Endnote library.

6 Click on **All References** to show all references in your library.



Note: You can also show all references from
Top bar menu > References > Show All References