

Emerald

1

Go to Emerald and retrieve your results

- 1 Enter a **search statement** in Emerald to search.
e.g. > *Performance and training*.

Search for

Performance in All fields

Match: ☒ All ☐ Any ☐ Phrase

AND Training in All fields

Match: ☒ All ☐ Any ☐ Phrase

- 2 Click on **View all ... results**.

[View all 42517 results](#)

1 **B** Recent Developments in Education and Engineering Training in the UK
Type: General review
Author(s): The Engineering Industry Training Board
Source: [Journal of European Industrial Training](#) Volume: 9 [Issue: 6](#) 1985
[▼ Preview](#) [WebBridge HKU Libraries](#) [OpenURL](#) | [Abstract](#) | [Reprints & permissions](#)

- 3 From the result list, **check** those which you consider as relevant.

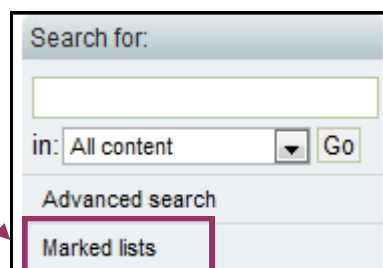
- 4 Click on **Go** to add all your selected results to the marked list.

[Select all](#) | Add to the marked list: [Session](#) **Go**

Icon key: ✓ You have access to this item **B** Backfiles **E** Earlycite **A** Abstract only

1 ☒ **B** Recent Developments in Education and Engineering Training in the UK
Type: General review
Author(s): The Engineering Industry Training Board
Source: [Journal of European Industrial Training](#) Volume: 9 [Issue: 6](#) 1985
[▼ Preview](#) [WebBridge HKU Libraries](#) [OpenURL](#) | [Abstract](#) | [Reprints & permissions](#)

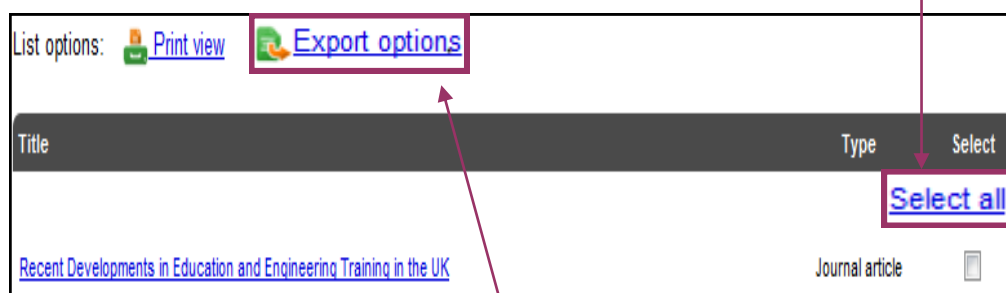
- 5 Click on **Marked lists**.



2

Direct export the results to Endnote

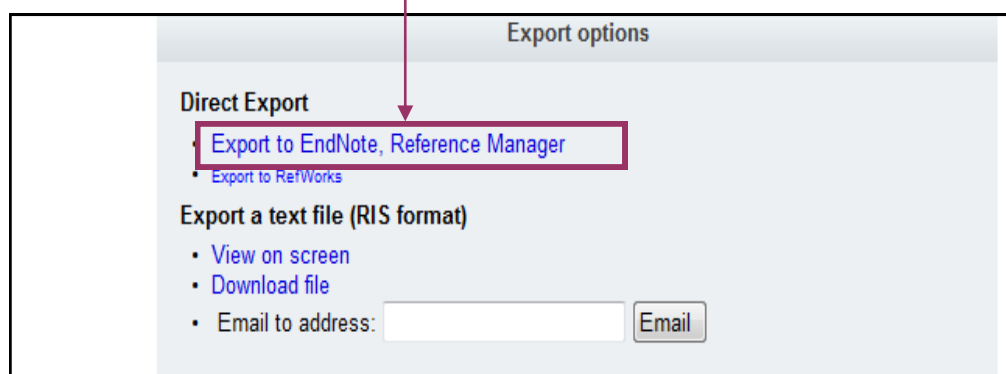
- 1 Click on **Select All** to select all your results.



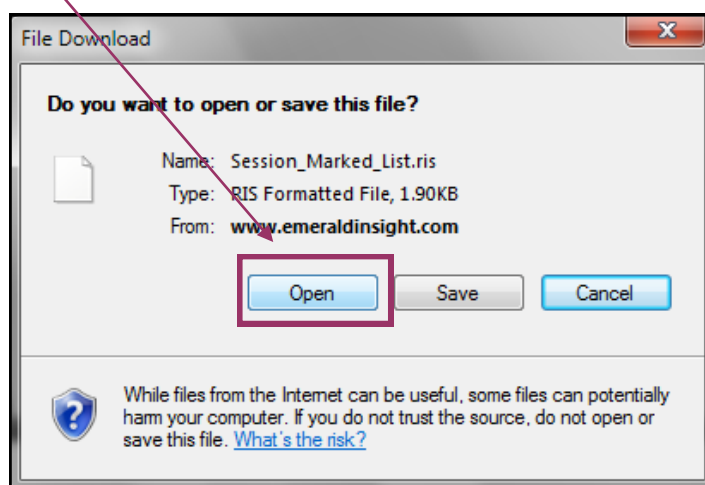
2

- Click on **Export options**.

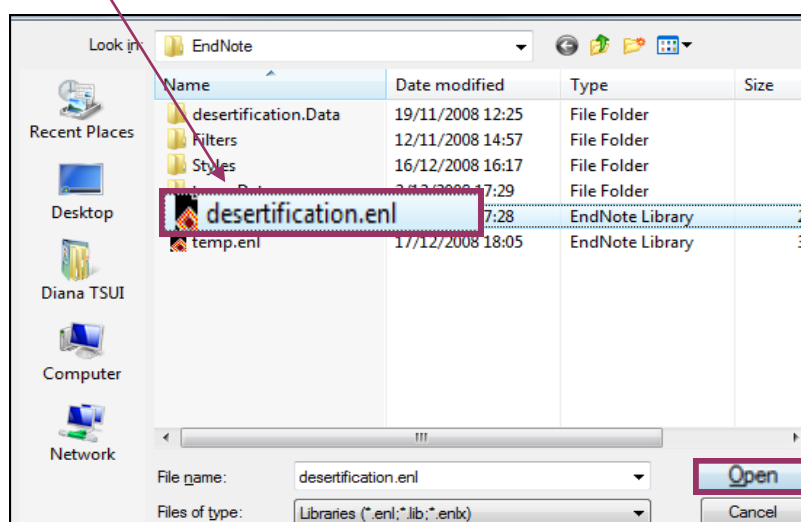
- 3 Select **Export to EndNote, Reference Manager**.



- 4 Click on **Open**.

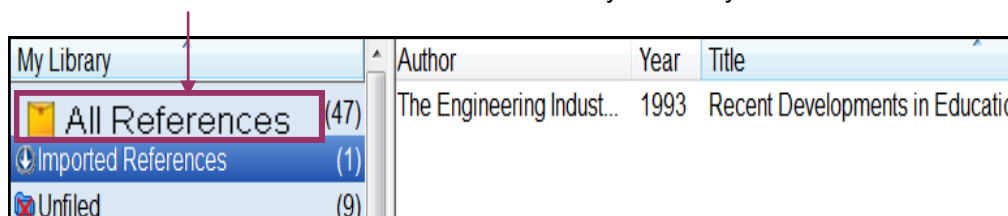


- 5 Locate your endnote library and click on **Open**.



- 6 The record will be duly imported into the selected Endnote library.

- 7 Click on **All References** to show all references in your library.



Note: You can also show all references from
Top bar menu > References > Show All References.